



WELCOME!

Thank you for joining the City of San Fernando
Housing Element Update

Virtual Town Hall Meeting #2

This meeting will begin shortly



City of San Fernando, CA
May 12, 2021

HOUSING ELEMENT UPDATE

VIRTUAL TOWN HALL #2



MEETING DETAILS


Questions & Comments

- Please submit all questions and comments using the Zoom “Chat” function
- Questions and comments will be addressed by our panel after the presentation
- Thank you for showing respect for all and avoiding language that may be offensive, abusive, or derogatory.




HOUSING ELEMENT UPDATE VIRTUAL TOWN HALL MEETING #2


WEDNESDAY, MAY 12, 2021 @ 6P.M.



PRESENTATION
Receive an overview of the Housing Element Update process.



LEARN
Get informed about the City's share of the Regional Housing Need Allocation (RHNA).




FEEDBACK
Have an opportunity to provide feedback regarding future housing policy.


THREE WAYS TO PARTICIPATE DURING THE MEETING



FACEBOOK LIVE
Watch live and leave your feedback in the comments:
@TheCityOfSanFernando



ZOOM
Call-in and provide your feedback:
(669) 900 6833
Meeting ID: 824 8314 4316
Passcode: 993948



EMAIL
Email your feedback on the day of the meeting:
CommunityDevelopmentStaff@sfcity.org



PROVIDE ADDITIONAL COMMENTS ON OUR MAP.SOCIAL COMMENTING APP
<https://hla.fyi/SanFernandoHEFeedback>
Scan QR Code to the right with phone camera app to load website



FOR MORE INFORMATION:
(818) 898-1227 CommunityDevelopmentStaff@sfcity.org WWW.SFCITY.ORG



MEETING DETAILS

Additional Information

The meeting is being recorded and links will be posted to the City website.

CONSULTANT TEAM



Lead
Consultant



Housing
Element



Public Safety &
Environmental Justice

CONSULTANT TEAM



Robert Kain
Houseal Lavigne



Brian Sims, GISP
Houseal Lavigne



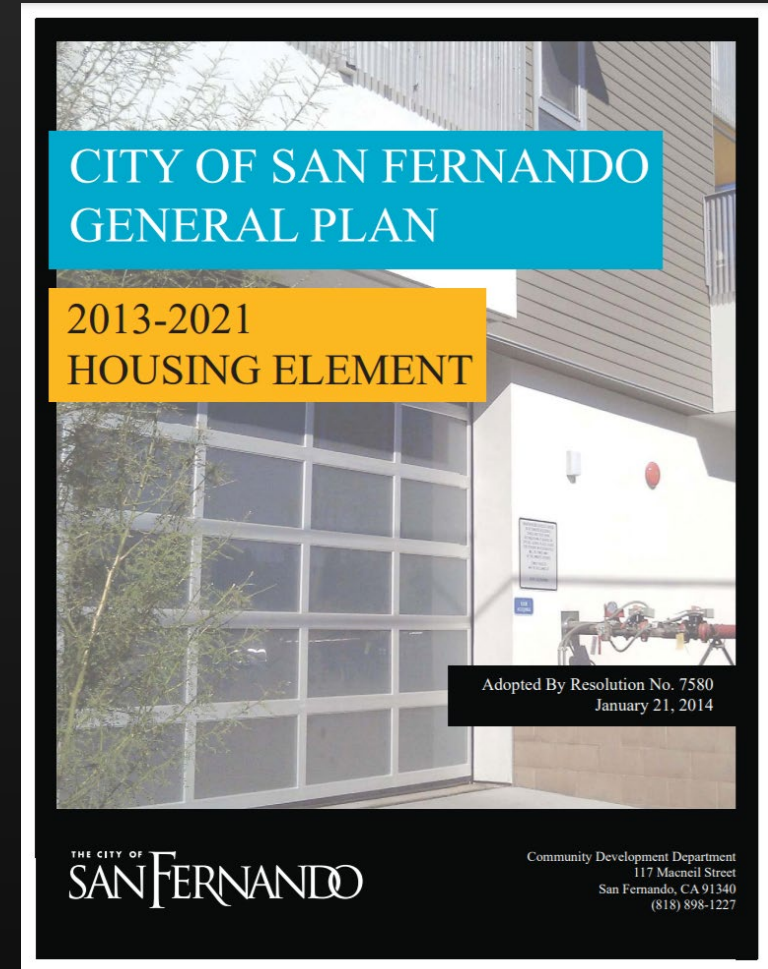
Reema Shakra, AICP
Rincon



Veronica Tam, AICP
VTA

RELATIONSHIP TO GENERAL PLAN

1. Every city in California must create a General Plan that acts as a roadmap for the future growth of the City.
2. General Plans must address key topic areas, called Elements, that cover things like land use, housing, transportation, services and infrastructure, etc.
3. Each element establishes broad objectives, focused policies and specific actions the City will take to achieve its goals.



PRESENTATION OVERVIEW

1. Project Overview and Timeline

2. Environmental Considerations

- Environmental Justice Policies
- Public Safety Element Update
- CEQA Process

3. Housing Element Update

- Identification of Potential Opportunity Sites
- Housing Element Advisory Committee



A black and white photograph of Trinity Church, a Spanish Colonial Revival style building with two bell towers and a tiled roof. A large palm tree stands in front of the church. In the foreground, a sign for Trinity Church lists service times and names. Two people are standing on the sidewalk near the church entrance. A street sign for O'Melveny is visible on the right. The text "ENVIRONMENTAL CONSIDERATIONS" is overlaid in large white letters across the center of the image.

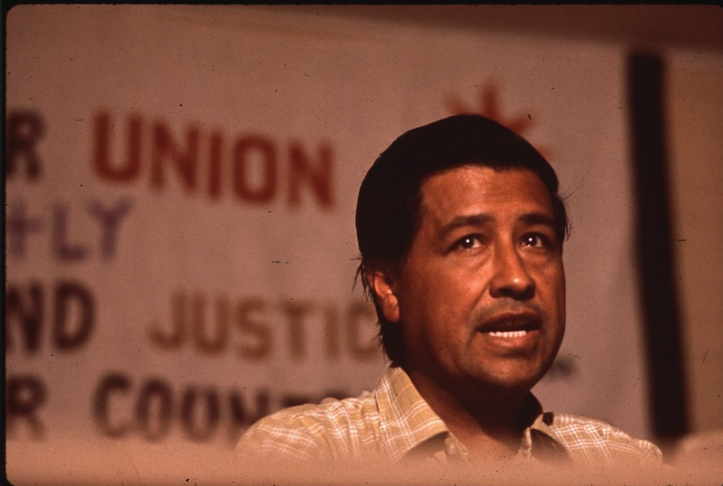
ENVIRONMENTAL CONSIDERATIONS

What is Environmental Justice?

- Fair treatment and meaningful involvement of people of all races, cultures and incomes as part of the development and implementation of environmental laws and policies
- A new element in the San Fernando General Plan with policies that aim to:
 - Reduce harm to communities that have historically been marginalized
 - Prioritize projects that address the needs of marginalized communities
 - Promote engagement of those communities in the City's decision-making process

History of Environmental Justice Movement

- History of exposure to pollution
- Disproportionate burden of pollution on communities of color and indigenous communities
- Senate Bill 1000



San Fernando History

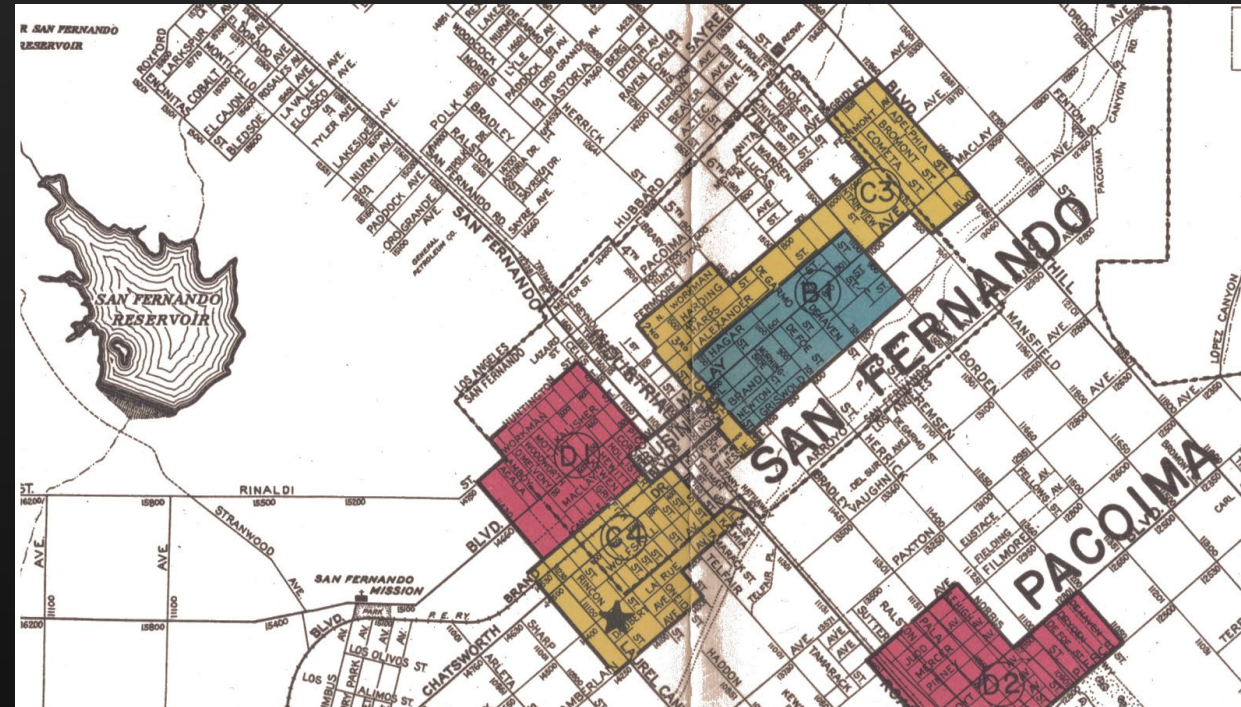
- City incorporated in 1874
- Rich in cultural diversity



Farm workers in the San Fernando Valley c. 1912; San Fernando Fiesta, 1930s
(Courtesy of San Fernando Valley Historical Society)

Redlining History in San Fernando

- Home Owners Loan Corporation
- Risk levels color-coded: from green (least risk), blue, yellow, and red (highest risk)
- Prevented wealth building in neighborhoods with communities of color
- San Fernando has neighborhoods marked as “low grade” (red and yellow on map) and “high grade” (blue-green on map)

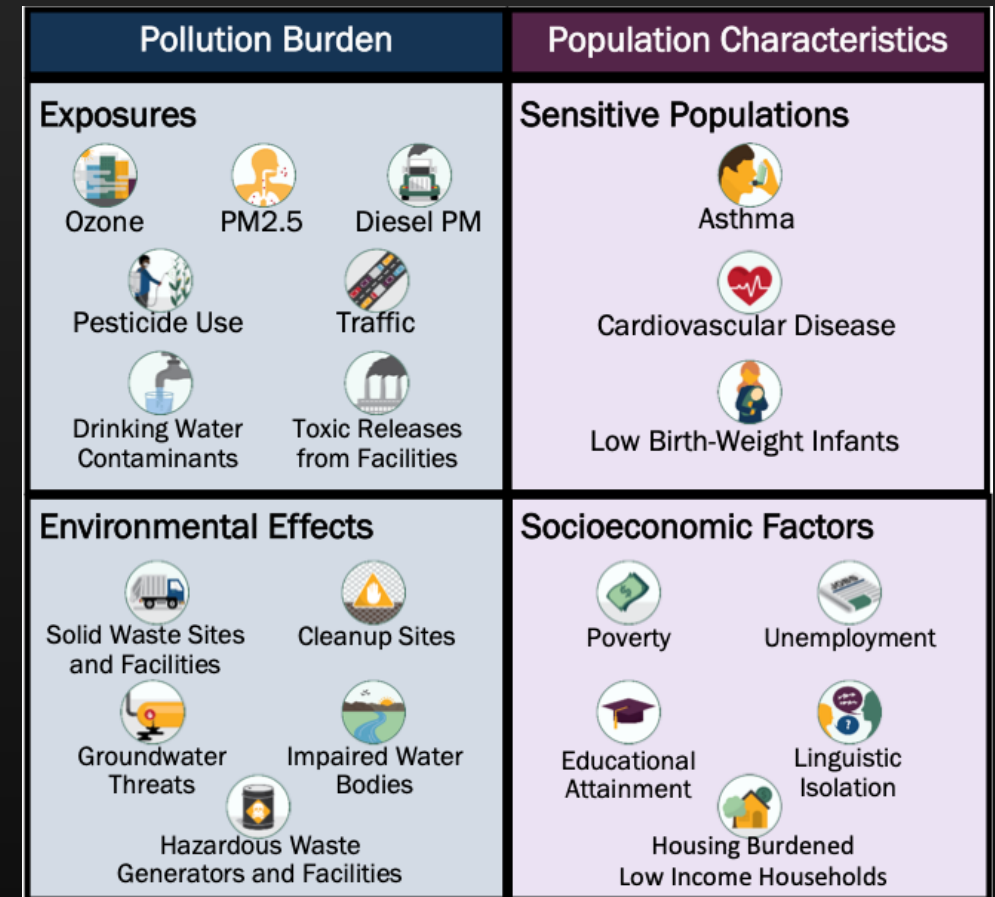


Current Conditions

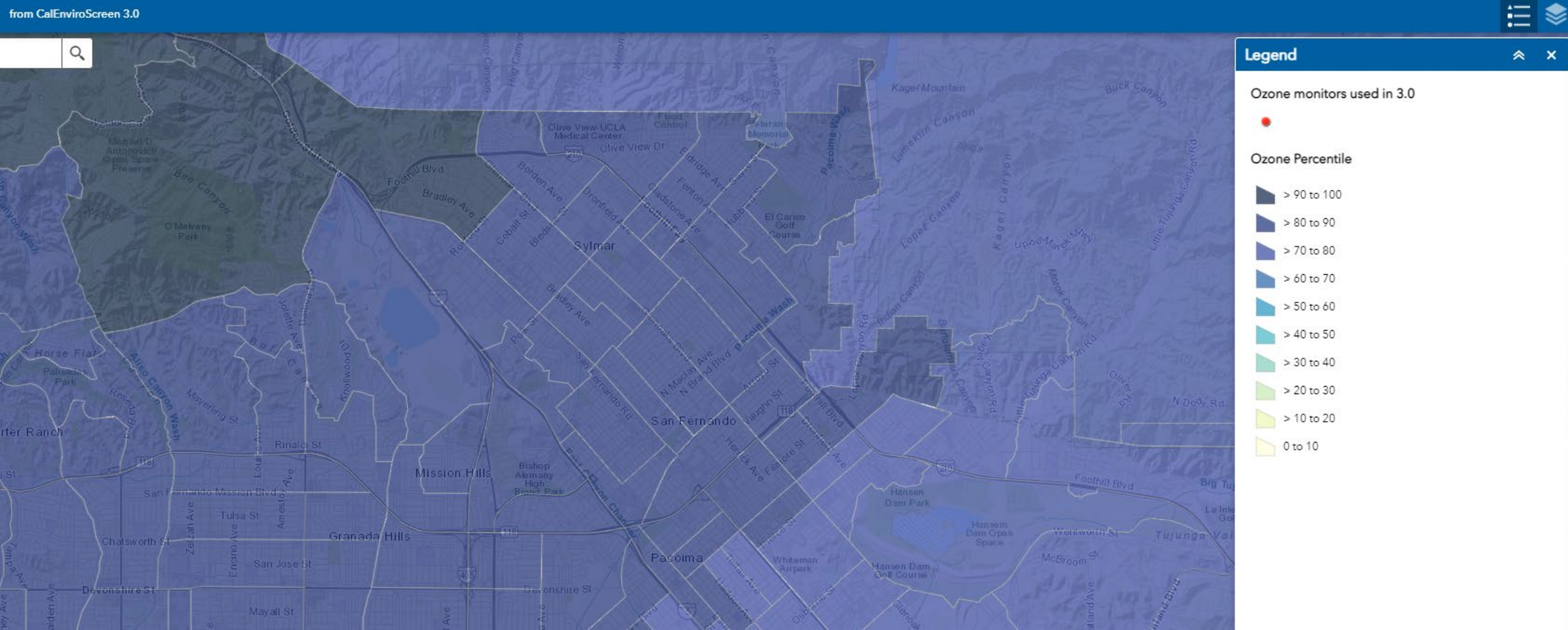
Indicators Present in San Fernando

- Ozone
- PM 2.5
- Diesel PM
- Drinking Water
- Cleanups
- Hazardous Waste
- Traffic
- Asthma
- Low Birth Weight
- Educational attainment
- Poverty
- Linguistic Isolation
- Unemployment
- Housing burden

State-wide Indicators of Pollution Burden and Population Characteristics



Current Conditions



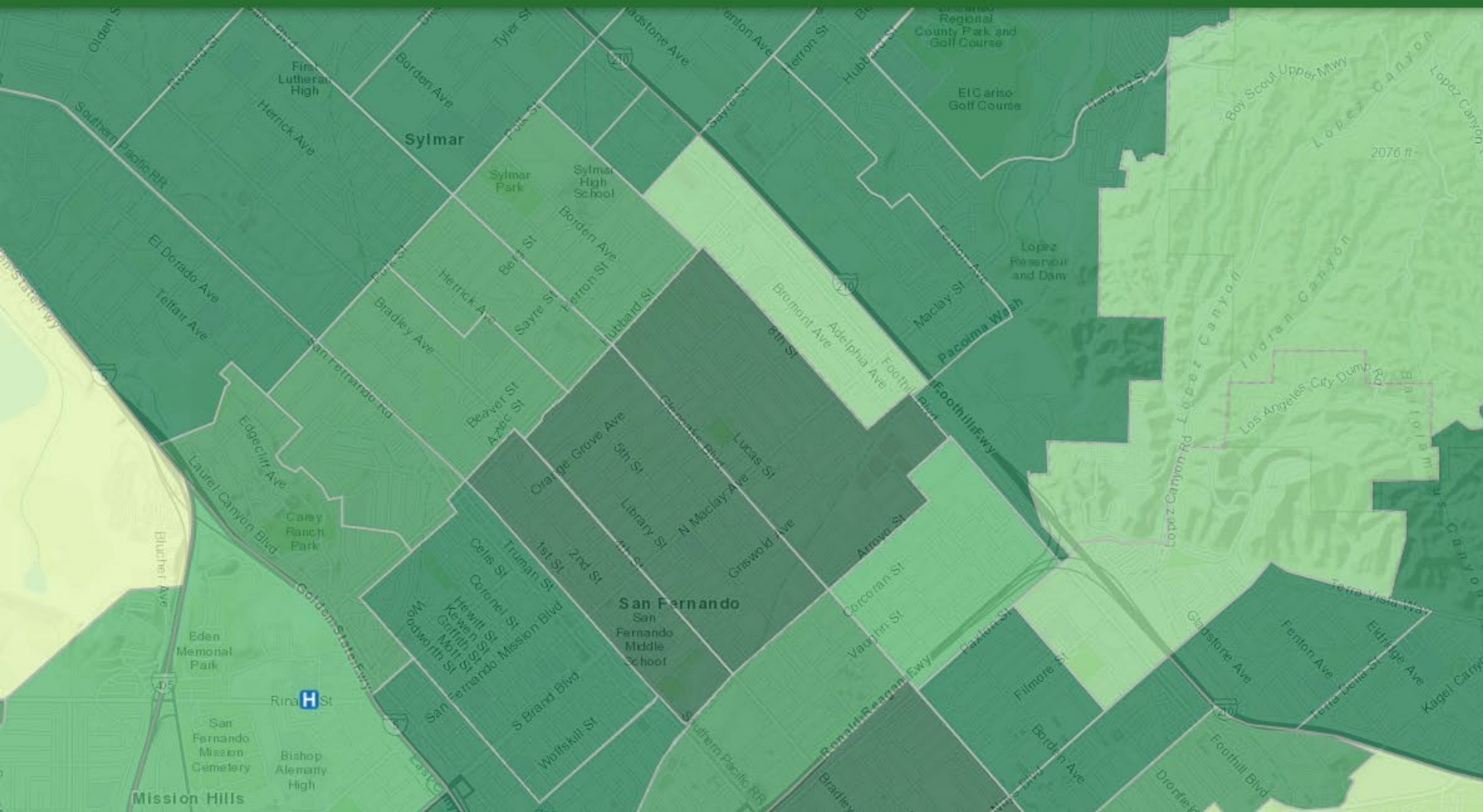
Current Conditions

from CalEnviroScreen 3.0



Current Conditions

CalEnviroScreen 3.0

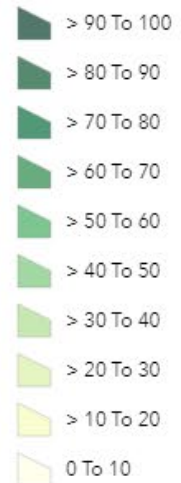


Legend

Emergency Departments

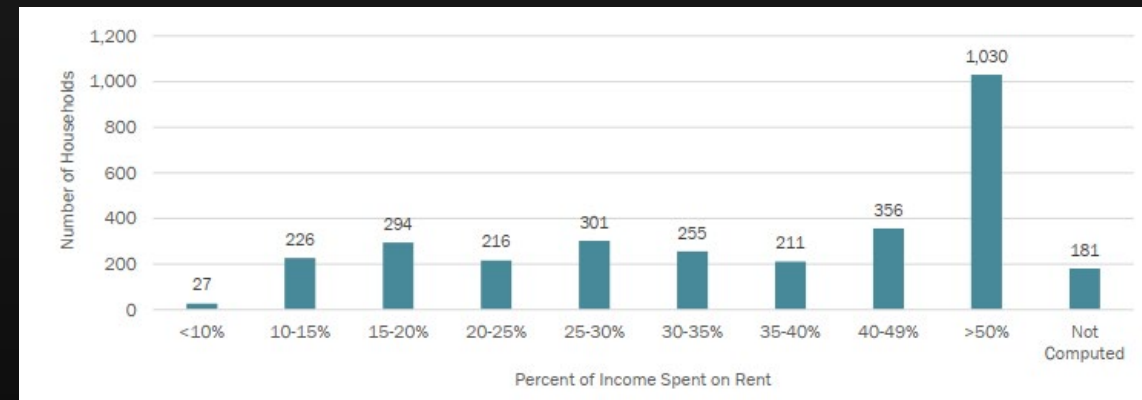
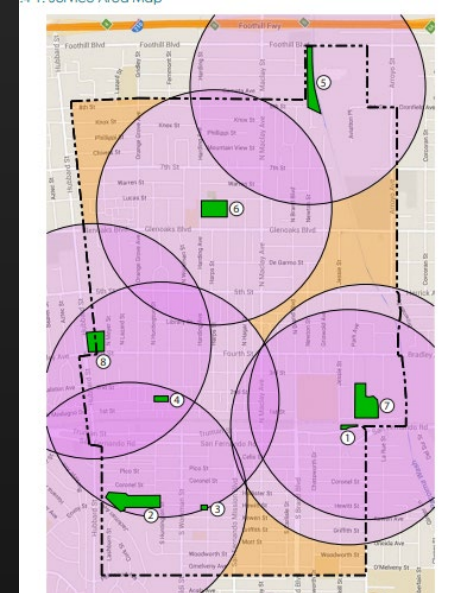


Asthma Percentile



Current Conditions

- Housing conditions
- Access to public transit, employment and services
- Food access
- Physical activity
- Tree canopy
- Access to parks
- Internet Access



We want to hear from you

- Which conditions impact your health or quality of life the most?
 - *Air pollution*
 - *Noise*
 - *Lack of access to healthy foods*
 - *Lack of good sidewalks, bike lanes, or transit*
 - *Lack of access to health care services*
 - *Affordable housing*
 - *Lack of good paying jobs*
 - *Other conditions?*
- Submit in chat on Zoom or Facebook Live

Queremos Escucharte

- Que condiciones afectan mas a tu salud o calidad de vida?
 - *La contaminacion del aire*
 - *Ruido*
 - *La falta de acceso a alimentos*
 - *La falta de buenas aceras, lineas de bicicleta o transito*
 - *La falata de acceso a atencion medica*
 - *Vivienda asequible*
 - *La falta de trabajos*
 - *Otras condiciones?*
- Envia su respuesta en zoom o facebook live

We want to hear from you

- Are there other aspects of daily life in San Fernando that impact your health and well being?
 - *Submit in chat on Zoom or Facebook Live*

Queremos Escucharte

- Hay otros aspectos de la vida diaria en San Fernando que afectan su salud o bienestar?
 - *Envia su respuesta en zoom o facebook live*

We want to hear from you

- What do you think are the most important issues for the City to address?
 - *Submit in chat on Zoom or Facebook Live*

Queremos Escucharte

- Cuales son las problemas mas importantes que la ciudad debe abordar?
 - *Envia su respuesta en zoom o facebook live*

Addressing EJ Issues with Policy

– A few examples:

- *Establish standards for engagement as part of City projects and plans*
- *Increase tree canopy with tree planting programs*
- *Improve walking and biking facilities*
- *Improve access to affordable housing*



Safety Element Update

- Current Safety Element
 - Seismic risk
 - Geologic hazards
 - Mudslides and landslides
 - Flooding
 - Urban fires
 - Hazardous waste
- Addressing new hazards
 - Extreme heat
 - Degraded air quality
 - Severe storms/wind
 - Drought
 - Wildfire
 - Vector borne disease



Increased
Possibility of Fire



Increase in
Extreme Heat Days



Increased
Frequency of
Destructive Storms



Decreased
Overall Precipitation

Vulnerable Assets and Communities



- Older adults
- Communities of color
- Non-English speakers
- Persons with chronic health conditions
- Renters
- People without health insurance
- People without access to cars or public transit
- Outdoor workers
- Homeless
- Undocumented
- Low-income
- Educational attainment



- Municipal buildings and public facilities
- Parks and open space
- Water and wastewater services
- Energy Delivery

We want to hear from you

- Which climate impacts concern you the most?
 - *Extreme heat*
 - *Degraded air quality*
 - *Severe storms/wind*
 - *Drought*
 - *Wildfire*
 - *Vector borne disease*
- Submit in chat on Zoom or Facebook Live

Queremos Escucharte

- Cuales impactos del medio ambiente le preocupan mas?
 - *Calor extremo*
 - *Mala calidad de aire*
 - *Tormentas severas*
 - *Sequia*
 - *Incendio*
 - *Enfermedades transmitidas de vectores*
- Envia su respuesta en zoom o facebook live

We want to hear from you

- Have you or a family member experienced any of these impacts from a heat wave?
 - *Experienced a heat stroke*
 - *Hard time walking, biking, or taking the bus*
 - *Not being able to run the air conditioning as much as you'd like*
 - *Other impacts?*
- Submit your answer in chat on Zoom or Facebook Live

Queremos Escucharte

- A sido afectado por los impactos de una ola de calor?
 - *Golpe de calor*
 - *Difficultad para caminar, andar en bicicleta o tomando el autobus*
 - *No poder correr el aire acondicionado por mucho tiempo*
 - *Otras impactos?*
- Envía su respuesta en zoom o facebook live

We want to hear from you

- Which solutions do you want to see implemented in San Fernando?
 - *More tree cover*
 - *Home retrofits with better insulation or better air conditioning*
 - *Public spaces with air conditioning*
 - *Better understanding of what to do on an extreme heat day or bad air quality day*
 - *Other solutions?*
- Submit in chat on Zoom or Facebook Live

Queremos Escucharte

- Cuales soluciones quieren ver implementado en San Fernando?
 - *Mas cobertura de arboles*
 - *Reacondicionamiento de viviendas con mejor aislamiento termico o mejor aire acondicionado*
 - *Espacios publicos con aire acondicionado*
 - *Obtener una mejor comprension de que hacer durante una dia caluroso o una dia con mala calidad del aire*
 - *Otras soluciones?*
- Envia su respuesta en zoom o facebook live

Addressing climate change issues with policy

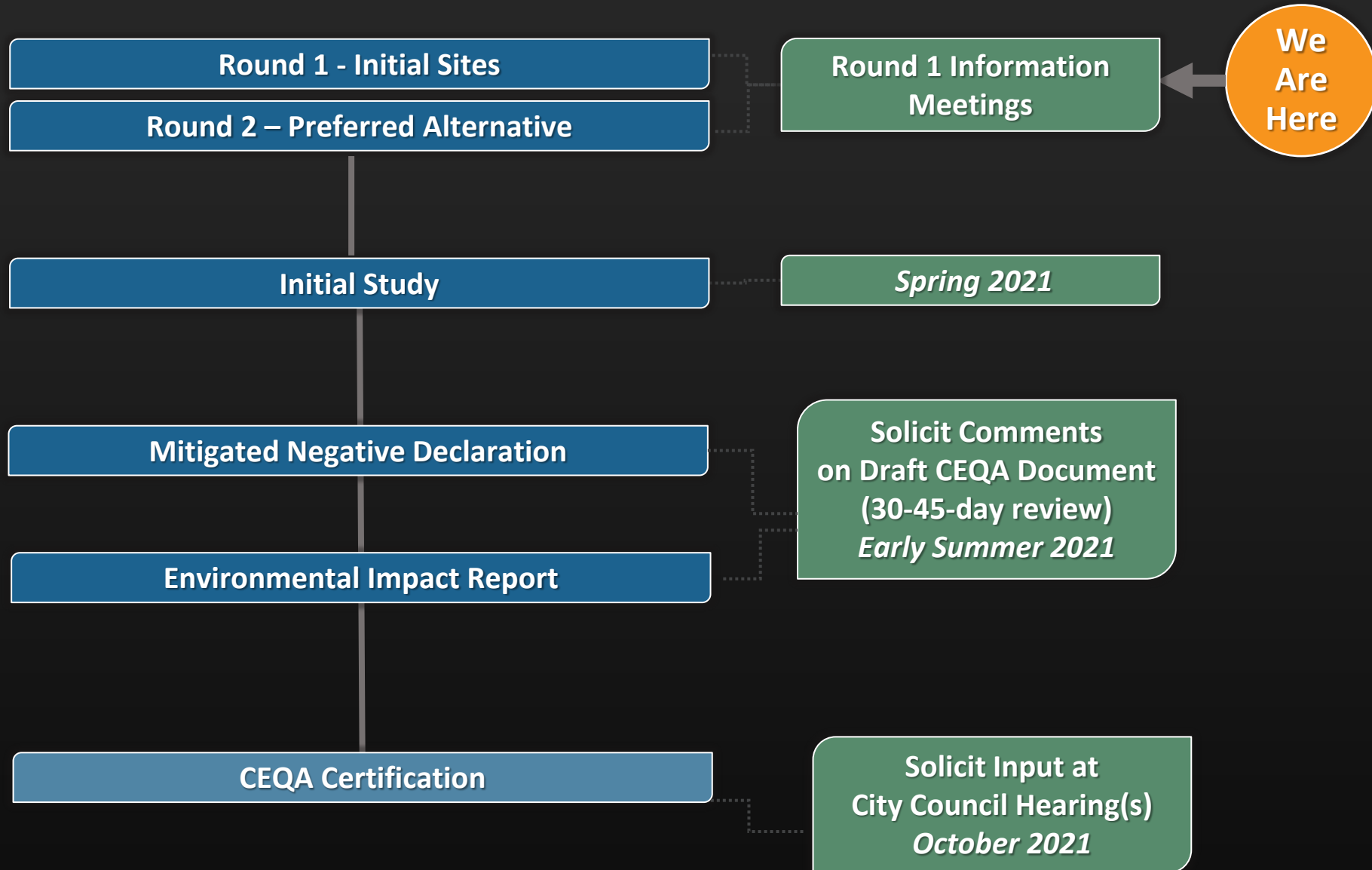
- Examples

- *Increase awareness on steps to take during extreme heat days and bad air quality days*
- *Increase tree plantings*
- *Establish green roofs*
- *Use cool paving*
- *Create new green spaces*
- *Partner with emergency responders and health departments to improve access to cooling centers or personal cooling resources*

Next Steps

- Work with Housing Technical Advisory Committee on better defining the issues and inequities in San Fernando
- Draft policy solutions

CEQA Environmental Review Process

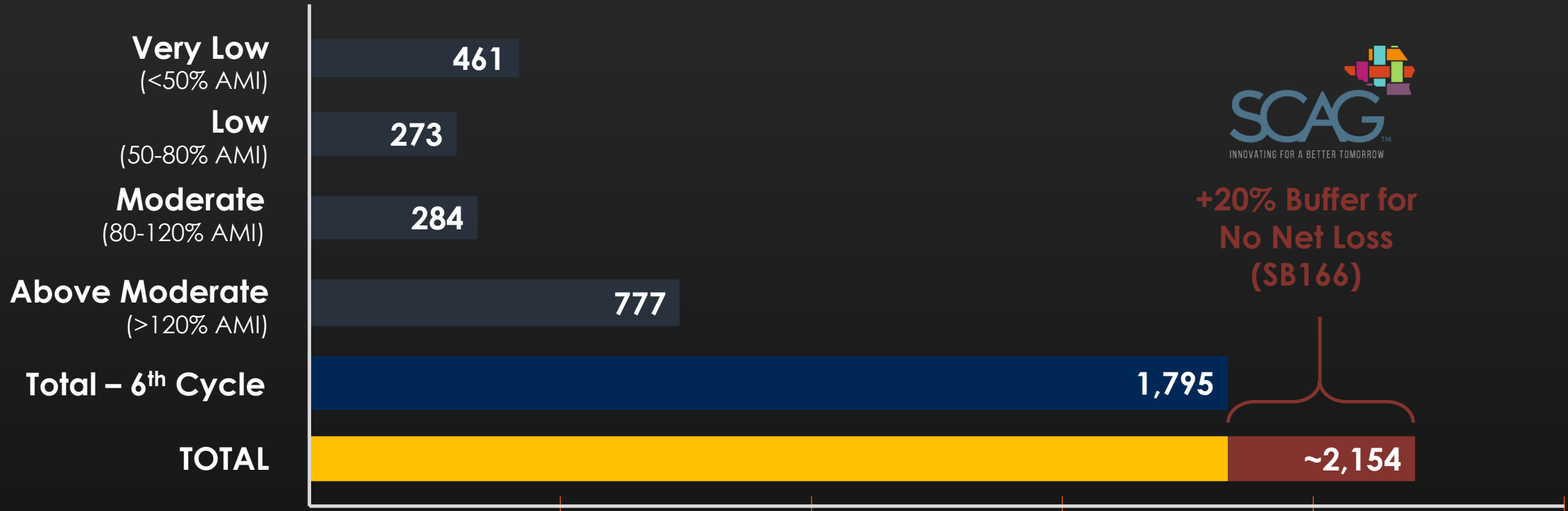


Q&A





6th-Cycle RHNA Allocation



Draft RHNA allocation as of March 2021

Sites Inventory

Identification of Opportunity Sites for Housing

Initial Selection Criteria – **First Pass**

Select sites based on;

Physical Site Characteristics

- ☐ Lot Size
- ☐ Year Built
- ☐ Current Land Use (*especially vacant*)

Underutilization / Potential for Redevelopment

- ☐ Improvement Ratio (value of buildings / value of land)
- ☐ Residual Lot Area, Floor Area Ratio, and/or Height

Specific Opportunities

- ☐ Specific Plan Areas
- ☐ Accessory Dwelling Units in Single-Family areas

Initial Selection Criteria – **Second Pass**

Exclude Site based on;

Hazards and Environmental Conditions

- ☐ Seismic Hazards
- ☐ FEMA Flood Risk
- ☐ CalFire Fire Risk
- ☐ Evacuation Routes

Note: these also relate to the Public Safety Element

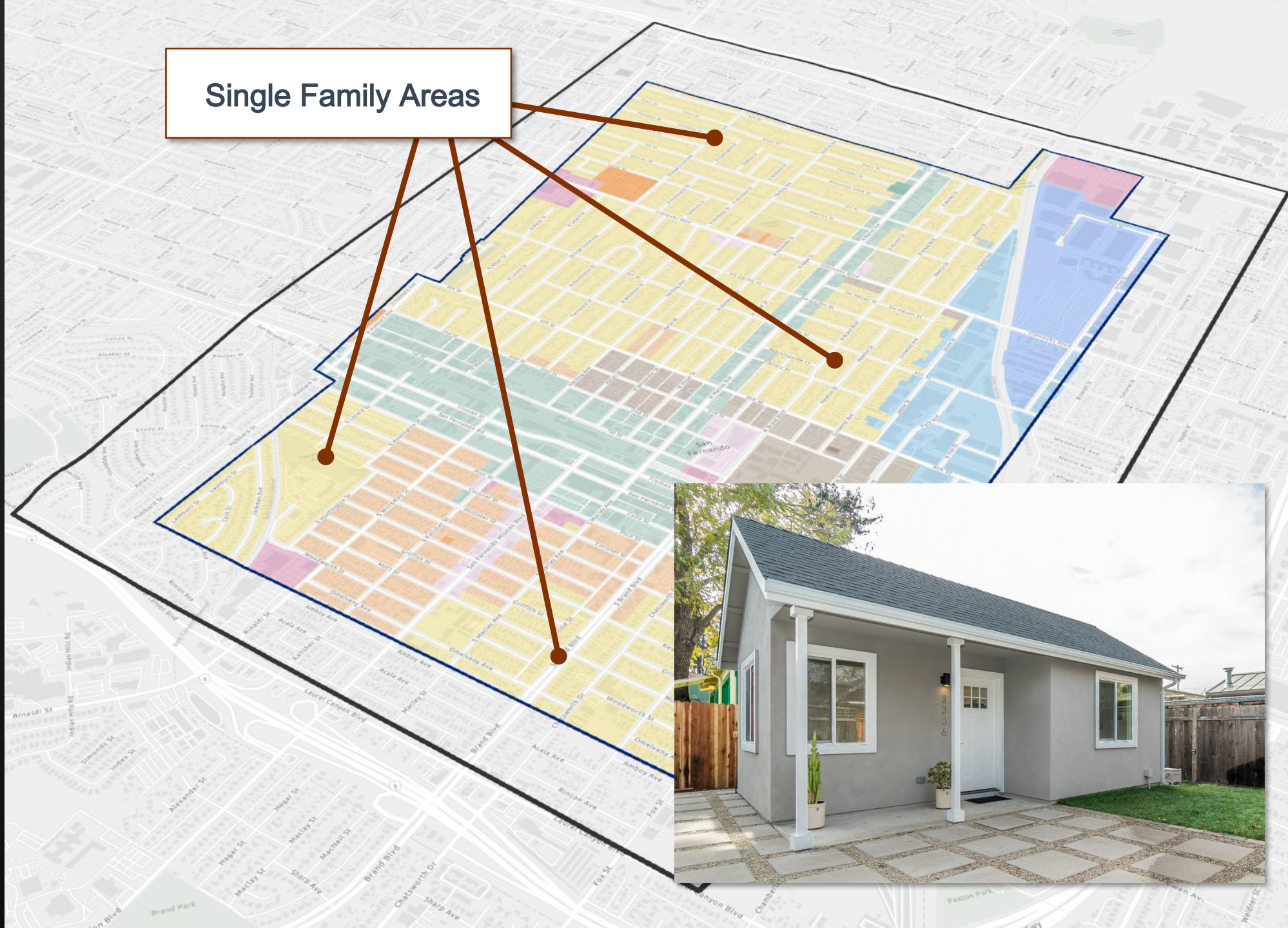
Overview of the City of San Fernando



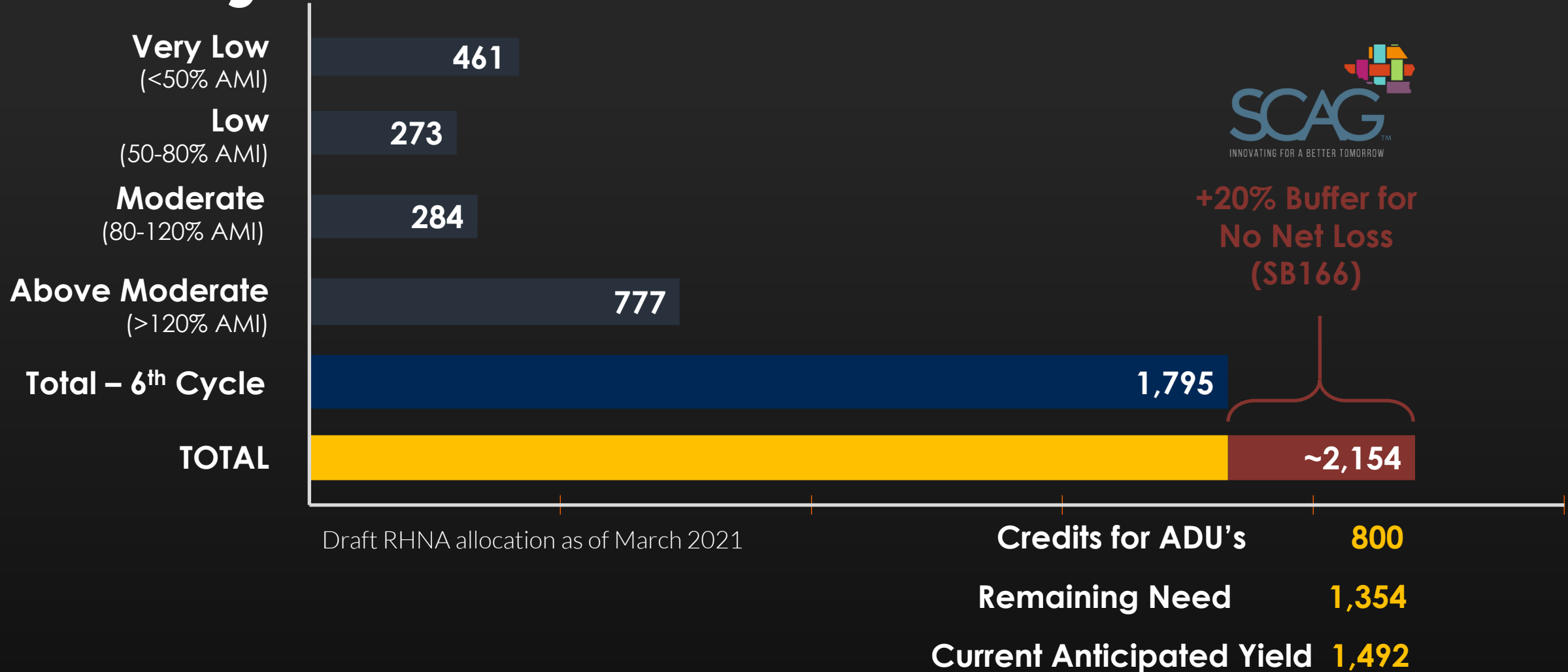
Single-Family Areas with ADU Potential

During the
Planning
Period
(2021-2029)

an
estimated
800 ADU's
will be
built



6th-Cycle RHNA Allocation



Areas with Residential Development Potential

Specific Plan and Mixed-Use Areas

Multi-Family Areas

OPPORTUNITIES SITES

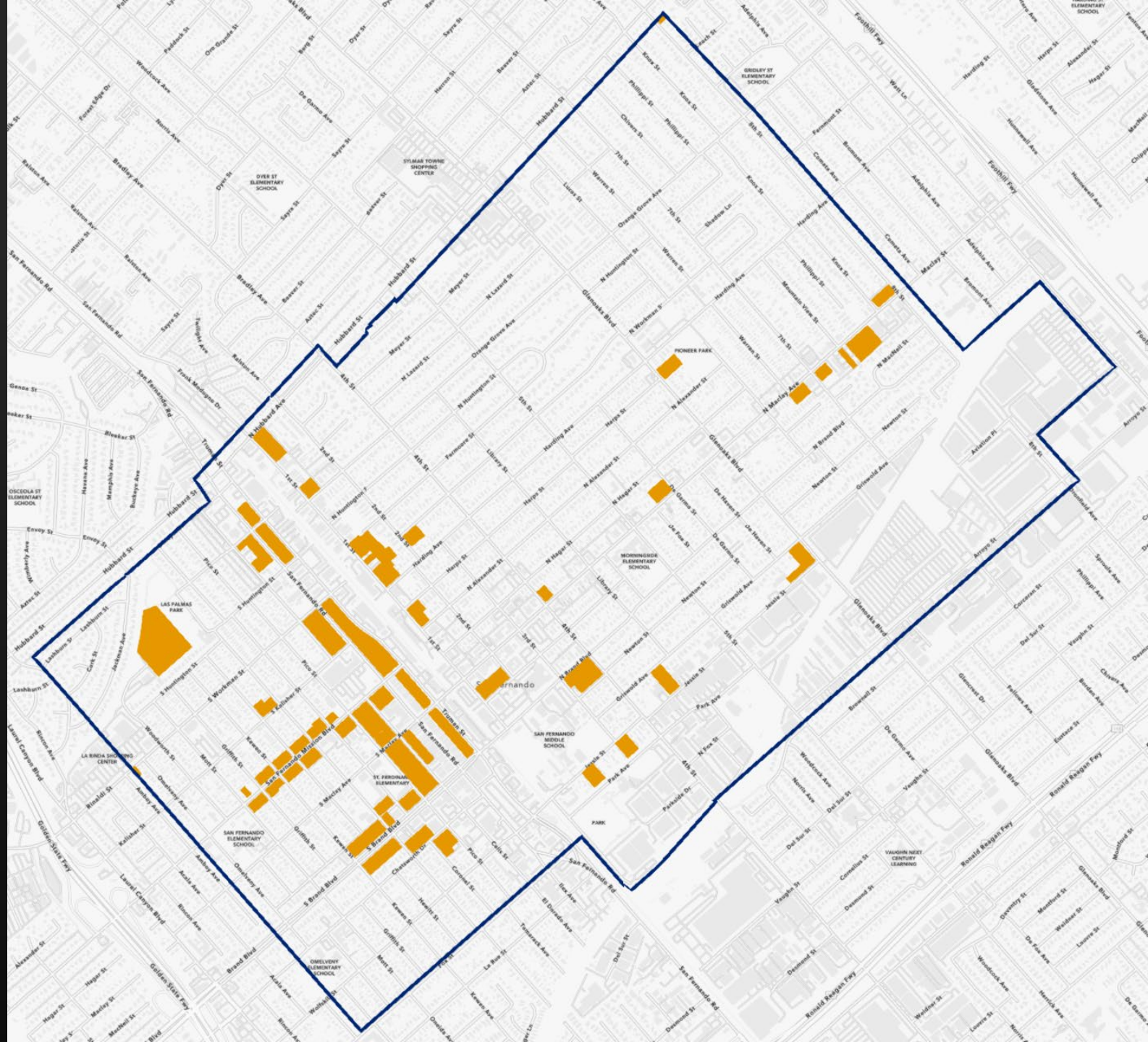
[illegible]

PRELIMINARY SITES IDENTIFIED

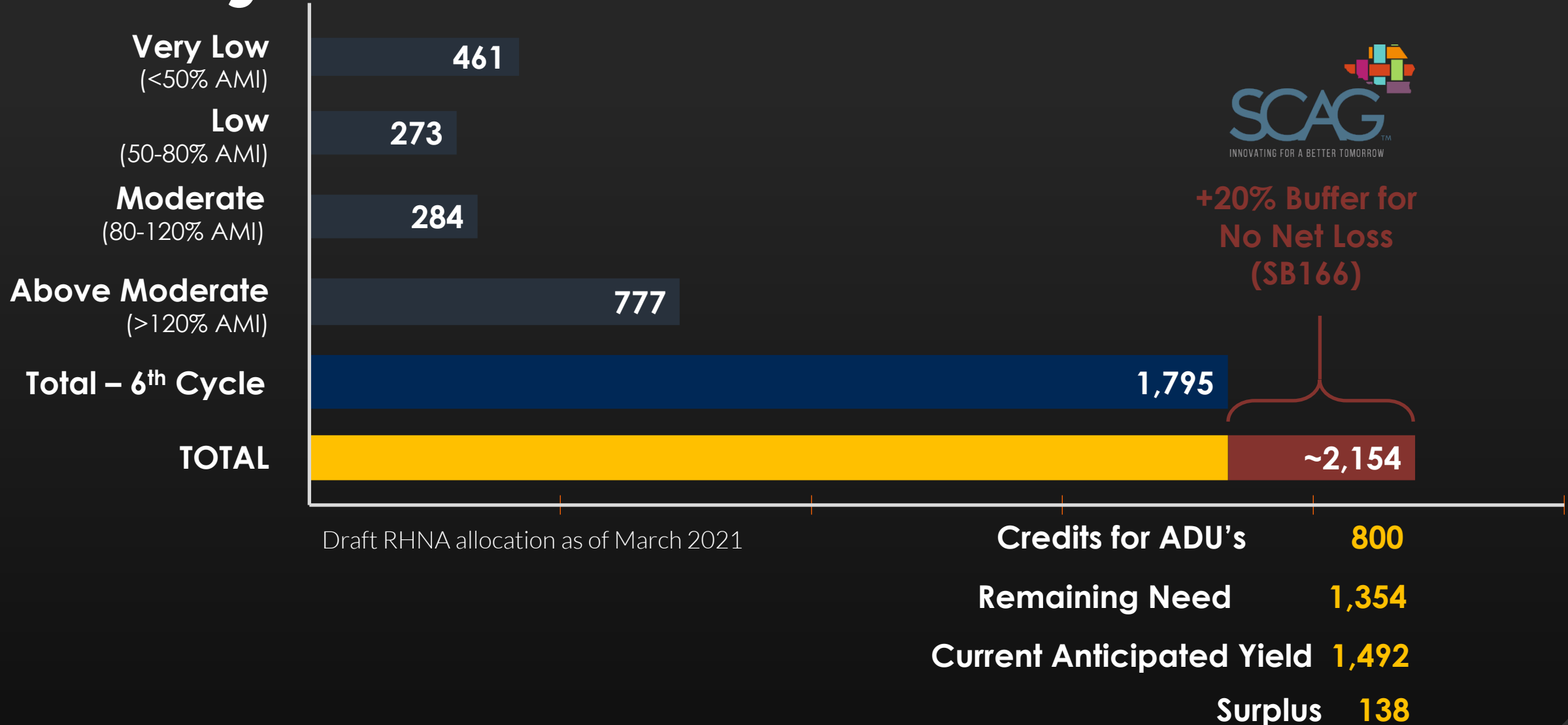
OPPORTUNITIES SITES

VIRTUAL TOWN HALL #2 SITES

CURRENT
ANTICIPATE YIELD
1,492



6th-Cycle RHNA Allocation



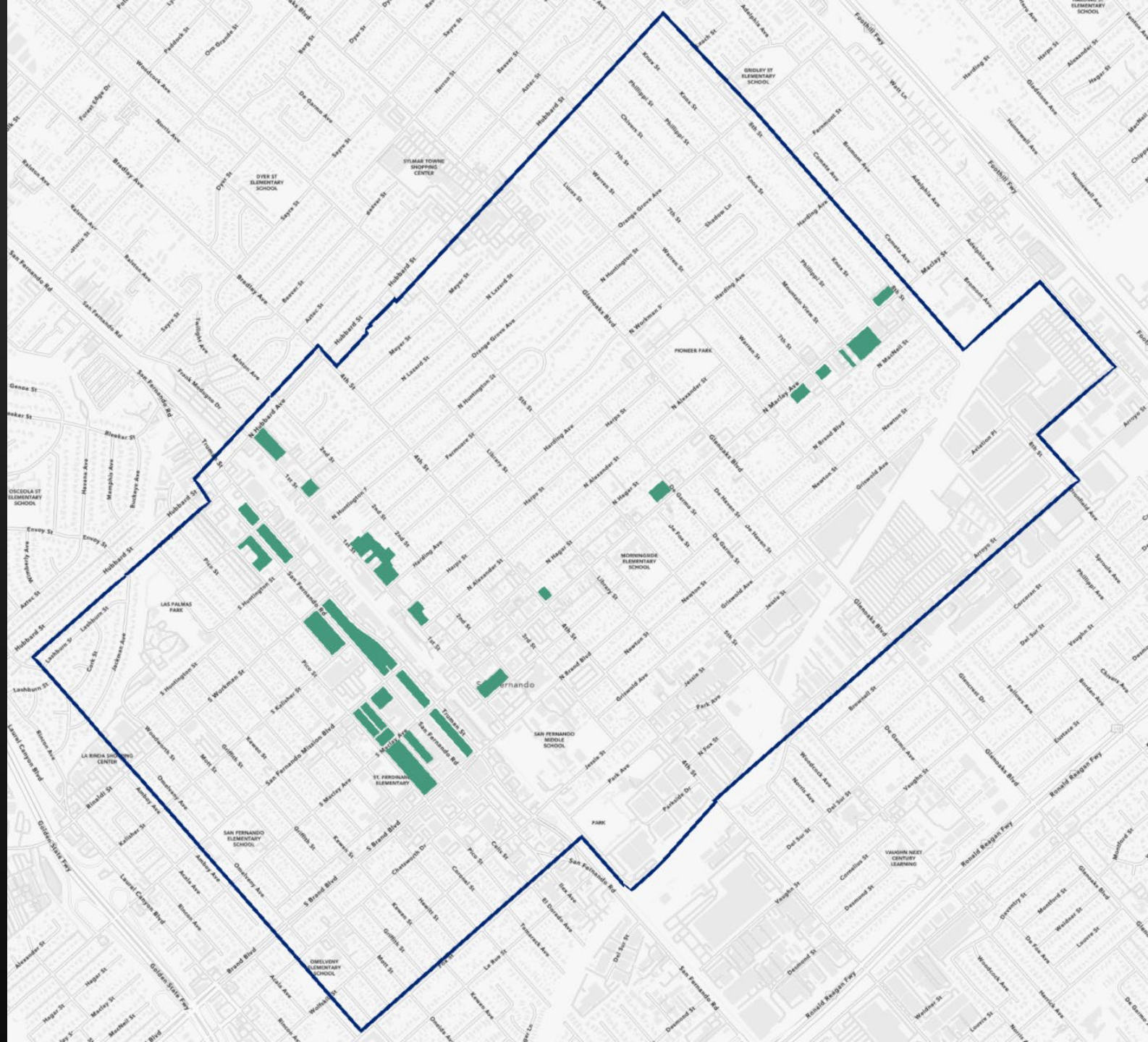
OPPORTUNITIES SITES SPECIFIC PLAN ZONING

[illegible]

PRELIMINARY SITES IDENTIFIED

OPPORTUNITIES SITES SPECIFIC PLAN ZONING

VIRTUAL TOWN HALL #2 SITES



HOUSING ELEMENT ADVISORY COMMITTEE

The **Housing Element Advisory Committee**, is a group of residents representing different parts of the city, that will meet regularly to review, hear public comments and provide input throughout the development of the Housing Element Update.

Next Meeting – May 18th

Meeting Topics:

- Environmental Justice
- Public Safety Element
- CEQA
- Opportunity Sites update
- Next Steps

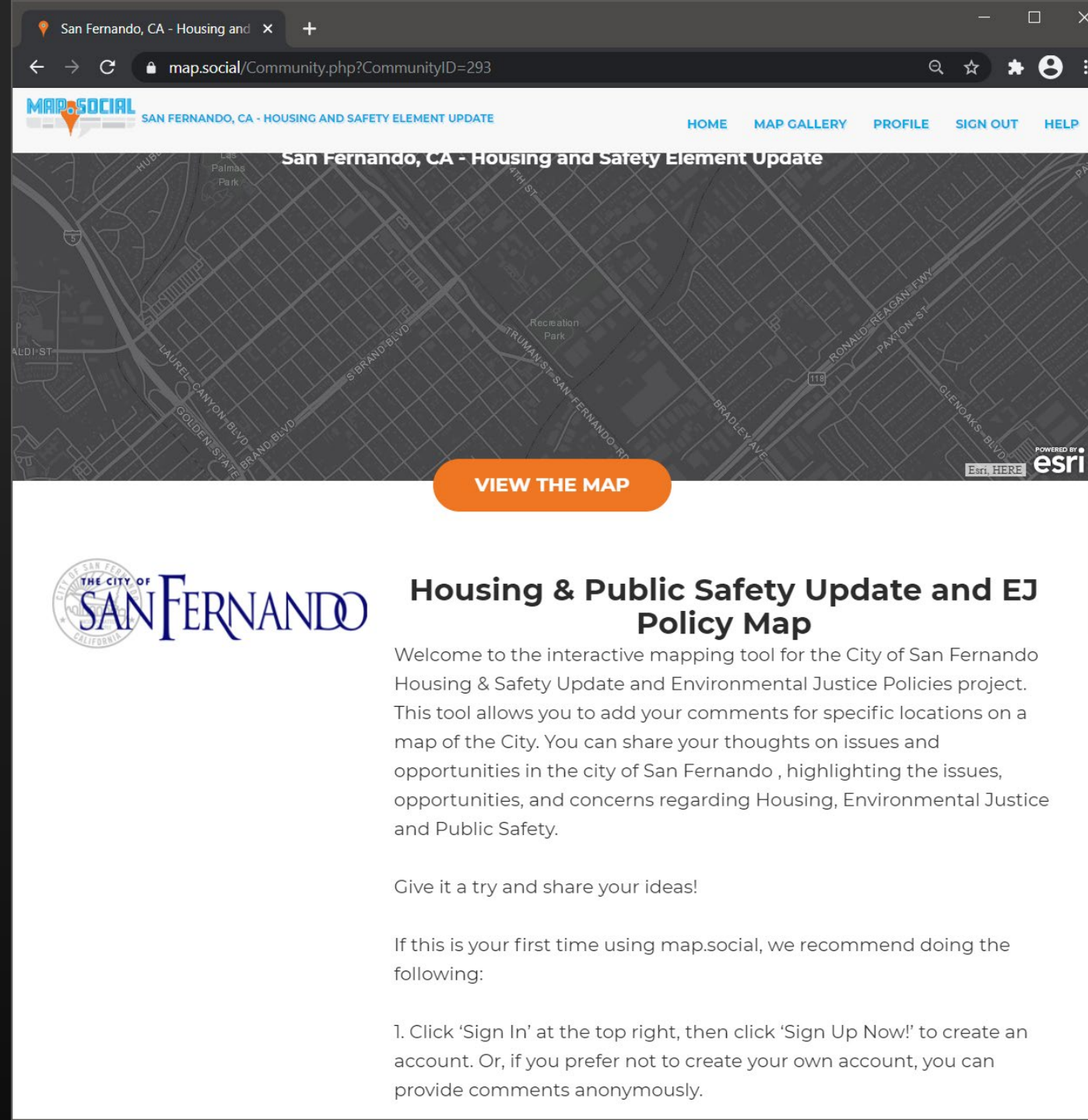
Q&A



MAP YOUR FEEDBACK

Share your ideas using our Map.Social app. You can access it online here:

hla.fyi/SanFernandoHEFeedback



The screenshot shows a web browser window with the URL map.social/Community.php?CommunityID=293. The page title is "San Fernando, CA - HOUSING AND SAFETY ELEMENT UPDATE". The navigation bar includes links for HOME, MAP GALLERY, PROFILE, SIGN OUT, and HELP. The main content area displays a map of San Fernando, CA, with a "VIEW THE MAP" button. Below the map, the City of San Fernando logo is shown, followed by the heading "Housing & Public Safety Update and EJ Policy Map". The text describes the interactive mapping tool and provides instructions for users.

San Fernando, CA - Housing and Safety Element Update

[VIEW THE MAP](#)

THE CITY OF SAN FERNANDO

Housing & Public Safety Update and EJ Policy Map

Welcome to the interactive mapping tool for the City of San Fernando Housing & Safety Update and Environmental Justice Policies project. This tool allows you to add your comments for specific locations on a map of the City. You can share your thoughts on issues and opportunities in the city of San Fernando, highlighting the issues, opportunities, and concerns regarding Housing, Environmental Justice and Public Safety.

Give it a try and share your ideas!

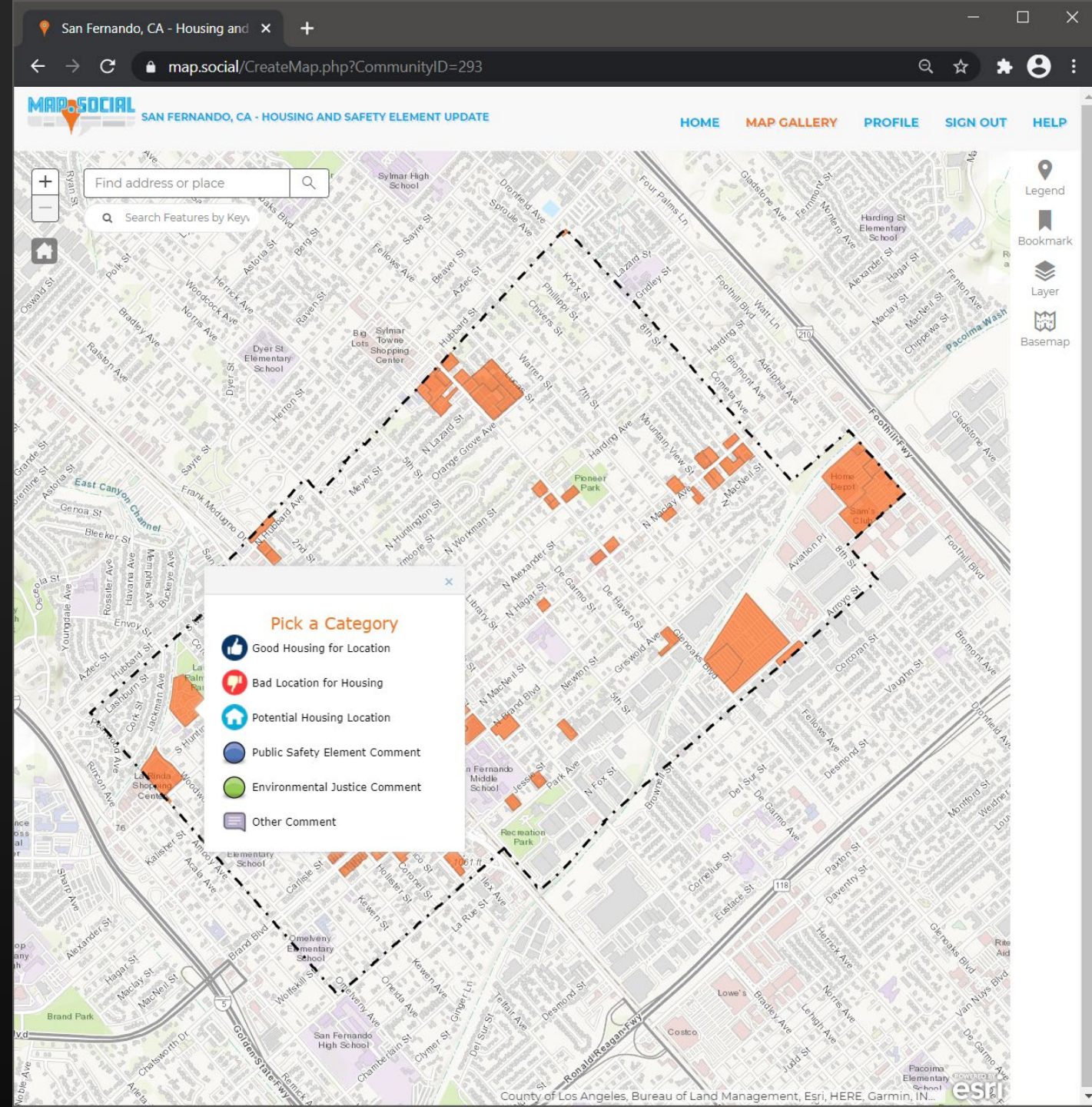
If this is your first time using map.social, we recommend doing the following:

1. Click 'Sign In' at the top right, then click 'Sign Up Now!' to create an account. Or, if you prefer not to create your own account, you can provide comments anonymously.

MAP YOUR FEEDBACK

Tips for using Map.Social

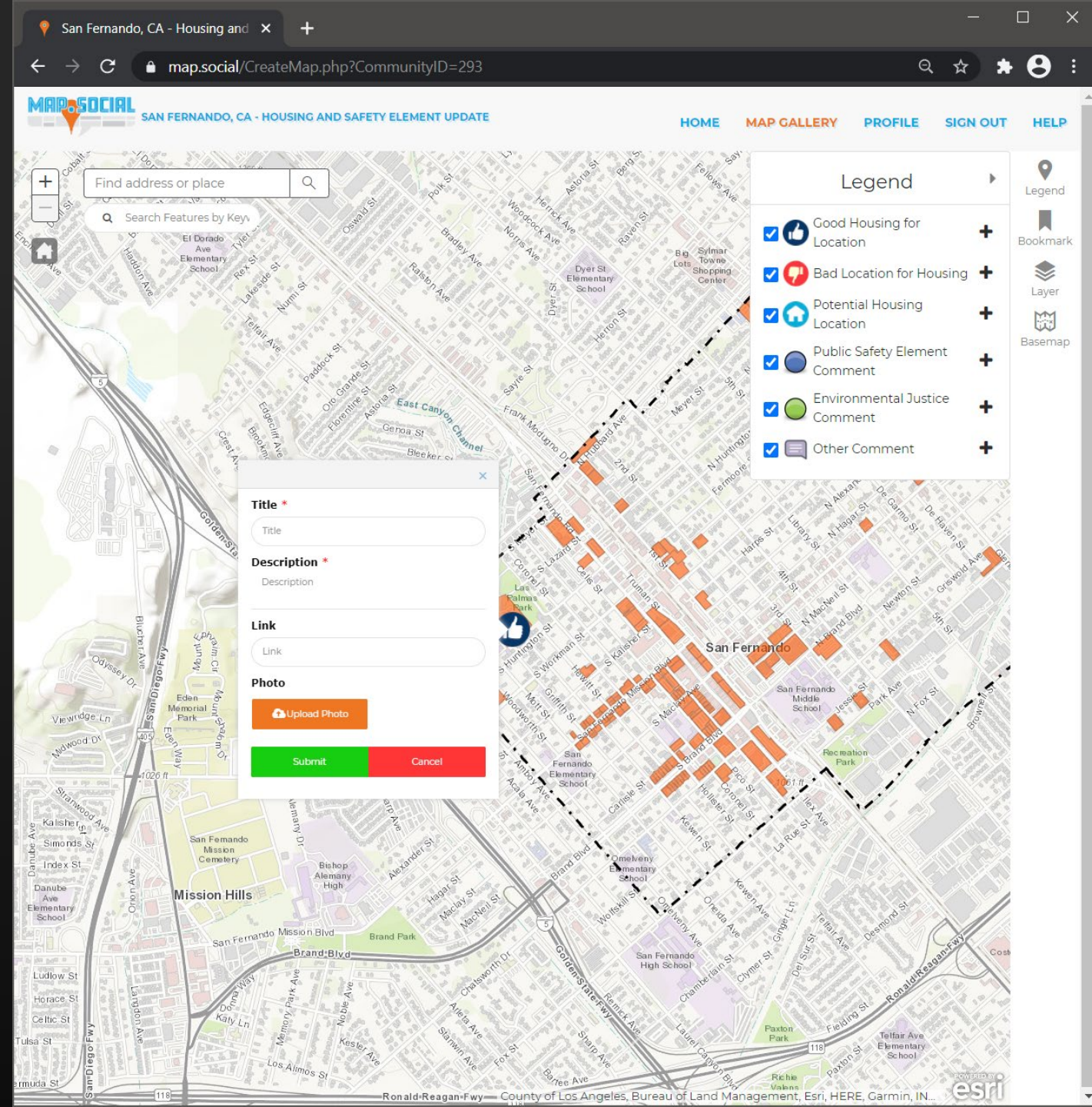
- Pan and zoom the map to see more detail
- Click on an area of interest then pick a category for your comment



MAP YOUR FEEDBACK

Tips for using Map.Social

- Give your comment a Title and a Description
- Click 'Submit' and you're done!
- You may leave more than one comment



NEXT STEPS

Stay connected!

- Visit the Planning Department page on the City website for more Housing Element Update Information : ci.san-fernando.ca.us/community-development/#planning
- Ask a question or provide your comments by email: CommunityDevelopmentStaff@sfcity.org
- Watch for future public meetings: **Next meeting in June/July**

A black and white photograph of Trinity Church, a Spanish Colonial Revival style building with two bell towers and a tiled roof. A large palm tree stands in front of the church. A sign in the foreground lists church services: 8:15AM "DON'T BE A PHARISEE", 11:00AM "LA AGONIA DE LA NOCHE OSCURA", and 6:00PM "SERVICIO DE ALABANZA". Two people are standing on the sidewalk in front of the church. A street sign for O'MELVENY is visible on the right. A car is partially visible on the far right. The text "Thank You" is overlaid in large white letters across the center of the image.

Thank You