



## Request for Information No. 1

June 15, 2022

**Project: Layne Park Improvements, 120 N Huntington Street,  
Project No. 7616, Plan No. P-737**

---

1. Please confirm whether this project is subject to a PLA (Project Labor Agreement), a PSA (Project Stabilization Agreement), a CBA (Collective Bargaining Agreement), a CWA (Community Workforce Agreement), or anything of that nature

*A: The only requirement for this project is the State prevailing wage.*

2. Please confirm that this project is a Federal Davis-Bacon Wage project.

*A: Yes, this project is a Federal Davis-Beacon Wage project.*

3. Does this project have a Good Faith Effort or a Percentage for disadvantage firms?

*A: No, Good Faith Effort or a percentage of disadvantage firms is not part of this project*

4. Will the Agency be providing and paying a Compaction Inspector?

*A: Unless otherwise called for hereinafter in the Special Provisions, all testing during construction will be performed by the Agency in such number and at such locations as deemed necessary by the Engineer to ensure compliance with the Plans and Specifications; the cost of all initial testing will be borne by the Agency; the cost of all retesting will be borne by the Contractor, and the amount due the Agency for said retesting will be deducted from the Contractor's progress payments.*

5. Will the Agency require a Temporary Identification Sign for this project?

*A: The City of San Fernando will be posting a project sign at the site along the N Huntington side of the property.*

6. Typically the Agency provides the CCC. The CCC does not contact with the Contractor. The Contractor has no involvement or exchange of money and direct hiring, besides support and coordination. The Agency should have a Maximum of hours, crew size and the amount the City will compensate CCC for these labor hours. Please clarify.

*A: The City will contract with CCC. The contractor will identify and coordinate the work CCC can do. The grant calls for CCC involvement typically CCC Corpsmembers can assist with debris removal, prepping for planting vegetation and installation of*

*bioswales, planting of vegetation per landscape designs. Cleaning and prepping the existing structures for renovations. The contractor will provide a timeline for such work.*

7. On Addendum #1 only page P-2 of the bid schedule was included in the Addendum. Are we still using P-3 the ADD ALT Bid Schedule? Or is the ADD ALT Bid Schedule not part of this bid? Please specify.

*A: Only P-2 was included in the Addendum because P-2 had a change to it due to the incorrect project title used on the sheet. P-3 is still to be used as part of your submittal.*

8. Per spec sub-section 6-9 of the special provisions Liquidated Damages shows to be \$500 per each day. The Contract and Special Provisions Liquidated Damages are in conflict. Please specify correct LD's?

*A: The correct Liquidated damages is \$500. The change will be reflected in the final version of the contract.*

9. I need some clarification on the play equipment and shade. Does the shade come with the Pacific Play System Equipment?

*A: Yes, there are two shade canopies that are part of the new composite structure.*

10. Does the new rubber surfacing come with the Play Equipment?

*A: No, this is a separate item.*

11. Can you provide us with a detail of the rubber surfacing? What's under the rubber surfacing? I.e. Concrete, Aggregate? Will there be any drainage under the new rubber surfacing?

*A: Re-top of 1.5" over existing 3710 SF of PIP rubberized surfacing, 50/50% color wear layer, aromatic over existing safety surfacing. Edges to be cut back and tapered in to maintain a smooth trip-free transition at access points. (Description provided from Pacific Rec Manufacturer.)*

12. If the new play equipment is added, does the existing play equipment and surfacing get removed and disposed?

*A: Contractor is responsible for demo and removal of play equipment and surfacing. Contractor to coordinate/confirm with City if removed play equipment is to be saved or discarded. Please note a portion of the existing playground is to remain and be protected in place – see plans.*

13. Can we get a detail for the Steel Edging? Please include the manufacturer, size and model.

*A: There is no steel edging in landscape plans. Redwood header is specified at decomposed granite edge.*

14. Please provide a detail for the Kiln Dried Log bench. Please include Manufacturer or Distributor and model number.

*A: Custom log benches are from Angel City Lumber. Sherman Oaks and Pasadena Blue Gum Eucalyptus Log Benches 18" high x variable depth (20" - 28")w x 8' long (Description provided by Angel City Lumber, contact [billing@angelcitylumber.com](mailto:billing@angelcitylumber.com)). See quote# 1651.*

15. Please provide us with a Manufacturer and model Number for the trash receptacle. Please specify.

*A: 32 Gal Trash Receptacle by Patterson Williams. Model #1150-BV with flat top lid and plastic liner. Contractor also to provide in-ground mount, Model #REM1150-M1. Install per manufacturers specifications.*

16. Please provide us with a Manufacturer and model Number for the Team Bench. Please specify.

*A: 21' Aluminum bench with back by Patterson Williams. Model #1103-21G. Install per manufacturers specifications.*

17. Please provide us with a Manufacturer and model Number for the Hot Ash receptacle. Please specify.

*A: Hot ash container with ash door by QCP Corp. Model #QPSHA2842. Install per manufacturers specifications.*

18. Please provide us with a Detail, Manufacturer and model Number for the Drinking Fountain. Please specify.

*A: No stand-alone drinking fountain in plans. Drinking fountains are part of restroom building plans.*

19. Plan Sheet C2.11 Demolition Plan - Top right of the sheet shows a Circled 7 with an arrow. Under Demolition Notes, I do not see a number 7.

*A: The call out note #7 on Sheet C2.11 Demolition Plan should be a note #1 protect in place. Please see Attachment "A" included with this addendum for clarification.*

20. Plan Sheet C2.11A Add Alt Demolition Plan - Bottom left of the drawings shows a Circled 11 with an arrow. Under Demolition Notes, I do not see a number 11.

*A: The call out note #11 on Sheet C2.11A Add Alt Demolition Plan should be deleted. Because on sheet C2.12A Alternative Grading Plan has note #21 RELOCATE WATER METER AND REDUCED PRESSURE BACKFLOW DEVICE (LOCATION TO BE DETERMINE BY THE CITY). Please see Attachments "B" and "C" included with this addendum for clarification.*

21. Plan Sheet L4.1 – Add Alt Planting Plan -This page shows about 6 trees that do not have a match to the Planting Legend. Are these supposed to be the 24" Box Koelreuteria Bipinnata (Chinese Flame Tree)?

*A: Yes, the trees are to be the 24" Box Koelreuteria Bipinnata (Chinese Flame Tree).*

22. Planting plan L4.1, there are 4 trees southeast of the proposed field and 2 trees south of the playground equipment. This tree symbol is not identified on the legend. Should this tree be 24" box Koelreuteria bipinnata?

*A: See #21*

23. There is not manufacturer or models for the ball valve at the valve manifolds. Please provide for bidding purposes.

*A: Superior model BSBV*

24. The irrigation legend shows bubblers for trees to be Rainbird RWS-B-1402. The irrigation details show Rainbird RWS-S-B-C-1402. Please advise which model to include for tree bubblers.

*A: Use model RWS-B-C-1402*

25. On plan page L3.0, the model of the turf rotor for the sportsfield is Rainbird F4-FC-SS. This is a 4" pop up rotor. The description requires a 6" pop up rotor. Please advise.

*A: Use specified 4" pop up. 6" in description is a typo.*

26. Drip tubing shown on irrigation legend, please confirm that the Max Allowed Hozin. Spacing is to represent the spacing of each tubing rows.

*A: The max. allowed hozin. spacing is the maximum distance between drip tubing rows.*

27. Please provide size and color for the proposed boulders.

*A: For bidding purposes Contractor can use Sierra Select Boulder, rounded. Use even mix of following sizes; 2'x2'x2', 3'x3'x3' and 4'x4'x4'.*

28. Plan page L2.1, there is a legend shown on the plans for a drinking fountain, please provide manufacturer and model for bidding purposes.

*A: See # 18*

29. Plan page L2.1 #6a – Kiln dried log bench, please provide more information on this product. Is this to be purchased from a supplier? What is the model for this?

*A: Custom log benches are from Angel City Lumber. Sherman Oaks and Pasadena Blue Gum Eucalyptus Log Benches 18" high x variable depth (20" - 28")w x 8' long (Description provided by Angel City Lumber, contact billing@angelcitylumber.com). See quote# 1651.*

30. Please provide model and size for the soccer team bench.

*A: See # 16*

31. Please provide model and size for the Trash receptacles.

*A: See #15*

32. Plan page L2.0 shows the edging to be redwood header. On the bid form, there is only steel edging shown. Please advise if these are the same items and which product to include in the bid.

*A: There is no steel edging in landscape plans. Redwood header is specified at decomposed granite edge.*

33. Plan page C2.11A, there is only about 75 lf of existing fencing shown to be removed here, please confirm that quantity of the existing chain link fence to be removed. there is 1 location shown with 65' and an area above that with another 10'.

*A: The 75' lf of existing chain link fence is the total approximate amount to be removed (65' lf along alley and 10' lf at utility enclosure). Contractor to confirm length of utility enclosure.*

34. On Alternate Bid schedule, item #8 – Remove Existing Perimeter Bollards is required, but it is not shown on drawings. Please advise.

*A: Civil Plans refer to perimeter bollard as 'Guard Post' Demolition Note #4.*

35. On Alternate Bid schedule, item #17- Hot ash Container is required, but it is not shown on drawings. Please advise.

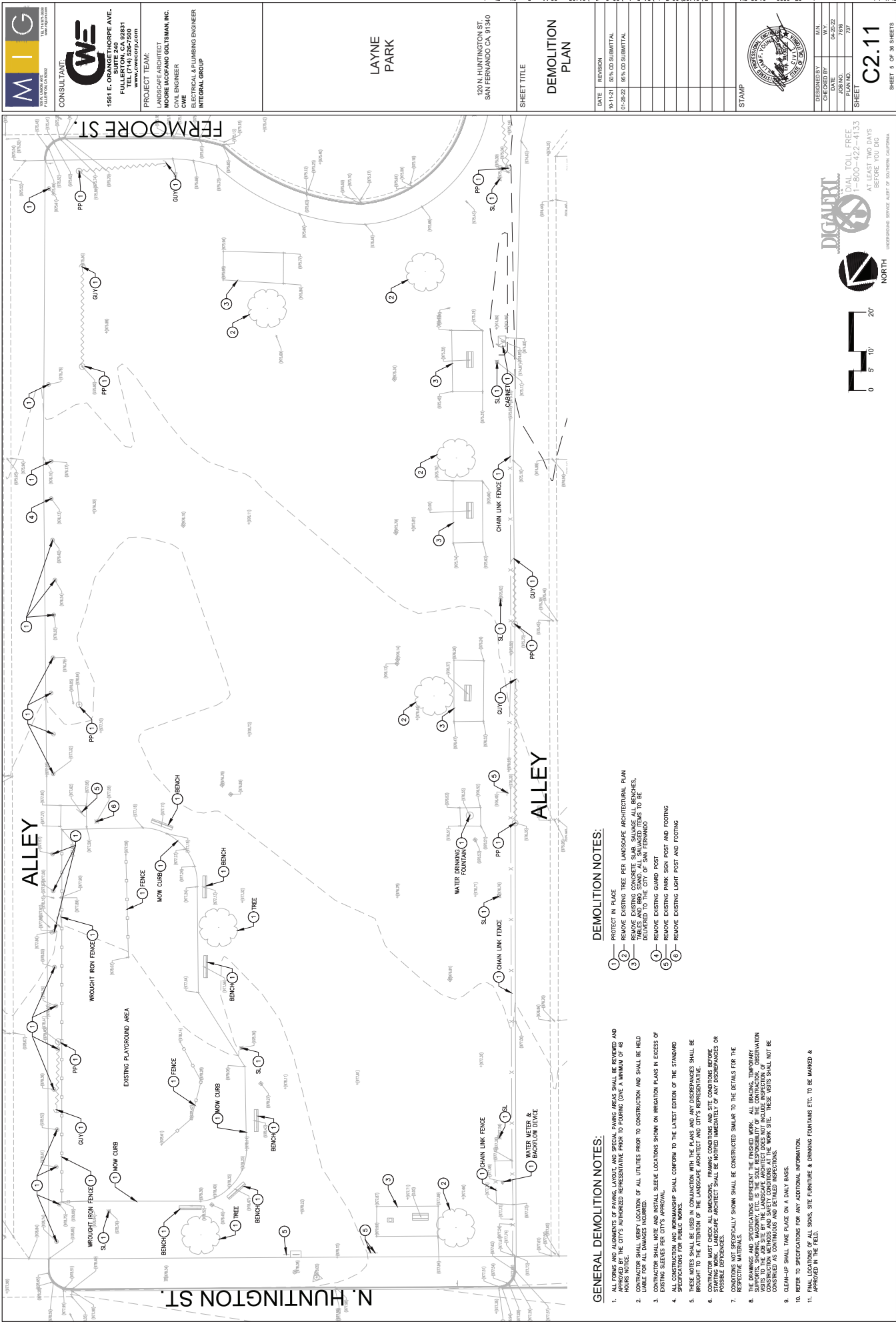
*A: Provide for 1 Hot Ash Container and concrete pad to be located adjacent to add alt BBQ. Hot ash container with ash door by QCP Corp. Model #QPSHA2842. Install per manufacturers specifications.*

36. On Alternate Bid schedule, item #10 – 4" concrete requires is 830 sf. Please confirm that the only area requiring concrete are the 4 picnic tables in the middle of the plans. The quantities are off on this item

*A: Correct, the add. alt. 4" concrete is approximately 830 sqft and is located at the 4 picnic tables.*

37. Prefabricated restroom lead time is currently at 240 calendar days. Can the contract timeline be extended to meet this?

*A: The contract may be extended if the contractor is selected. Contractor shall consider contacting other manufacturers.*





ATTACHMENT "B"

