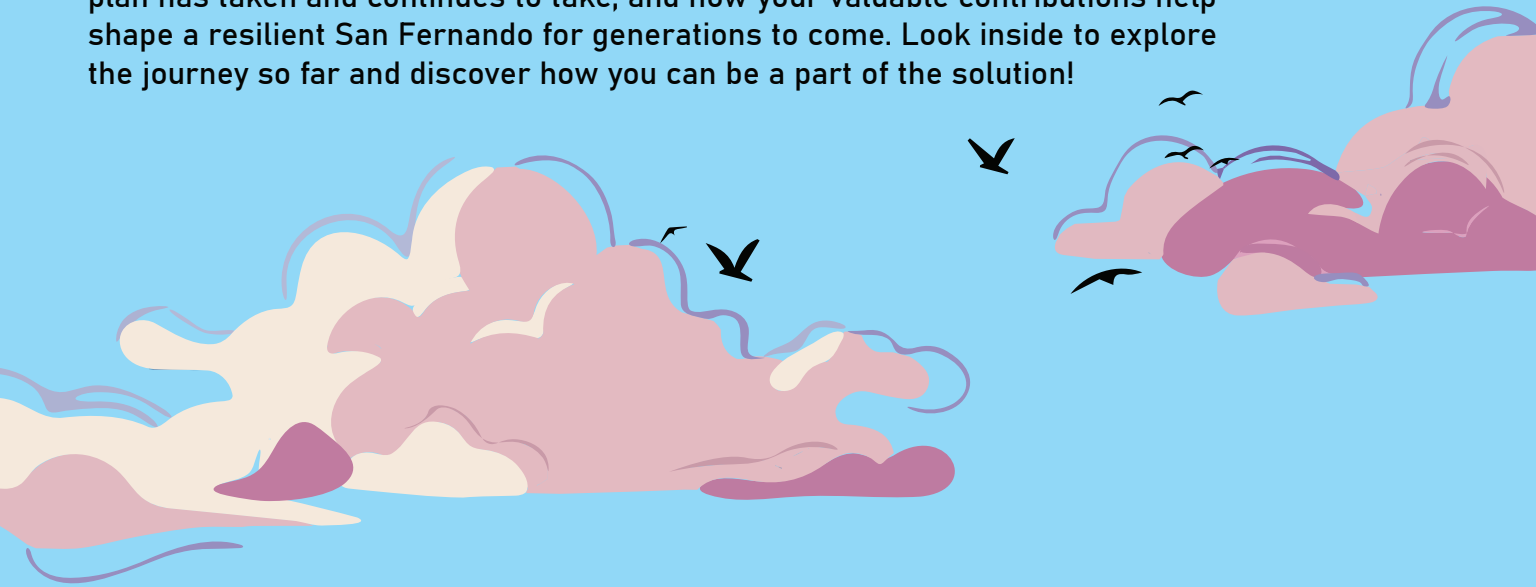


The background is a stylized illustration. At the bottom, there are jagged mountain peaks in shades of purple and blue. Above the mountains, there are several clouds in soft pastel colors like pink, yellow, and light blue. Numerous black silhouettes of birds are scattered across the sky, which transitions from a light purple at the top to a light blue at the bottom.

*City of
San Fernando*

CLIMATE ACTION RESILIENCE PLAN

This booklet is your guide to understanding our city's living roadmap for a healthier, safer, and more connected future. Here, you'll learn about the challenges climate change presents to our community, the proactive steps our plan has taken and continues to take, and how your valuable contributions help shape a resilient San Fernando for generations to come. Look inside to explore the journey so far and discover how you can be a part of the solution!



Thank you to our partners who have been working to bring these important updates to our community.



Our Climate Action and Resilience Plan, or **CARP**, is our city's living map for a healthier, safer, and more connected future. It's about protecting what we cherish, together.

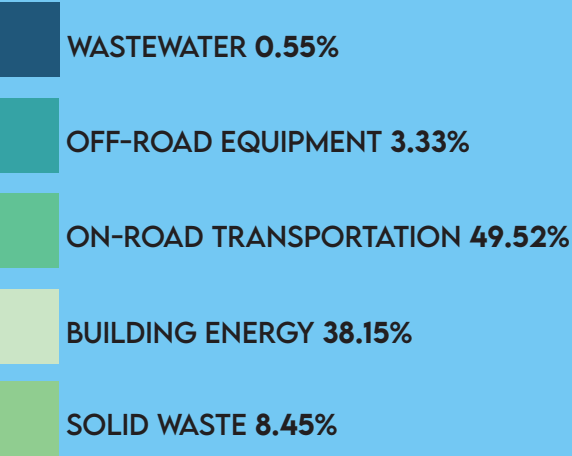
**WHAT DO YOU
LOVE MOST ABOUT
SAN FERNANDO?**

A large, empty, light blue rectangular box with a green border, intended for a response. It occupies the right half of the image.

Every time we drive or turn on lights, our city releases invisible gases that trap heat and change our weather. These '**GREENHOUSE GASES**' lead to hotter days, less rain, and stronger storms. But seeing this is the first step to making a positive shift – you're part of that change!



GHG EMISSIONS BY SECTOR

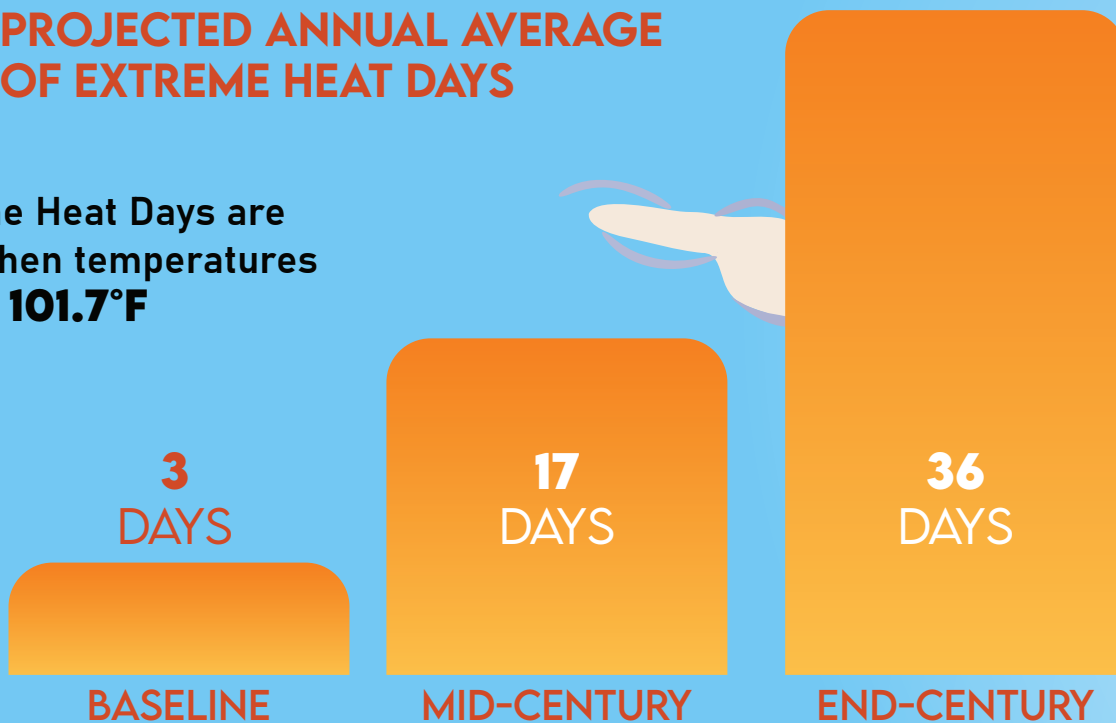


WHAT'S ONE SMALL CHANGE YOU MADE TODAY FOR A COOLER TOMORROW?



PROJECTED ANNUAL AVERAGE OF EXTREME HEAT DAYS

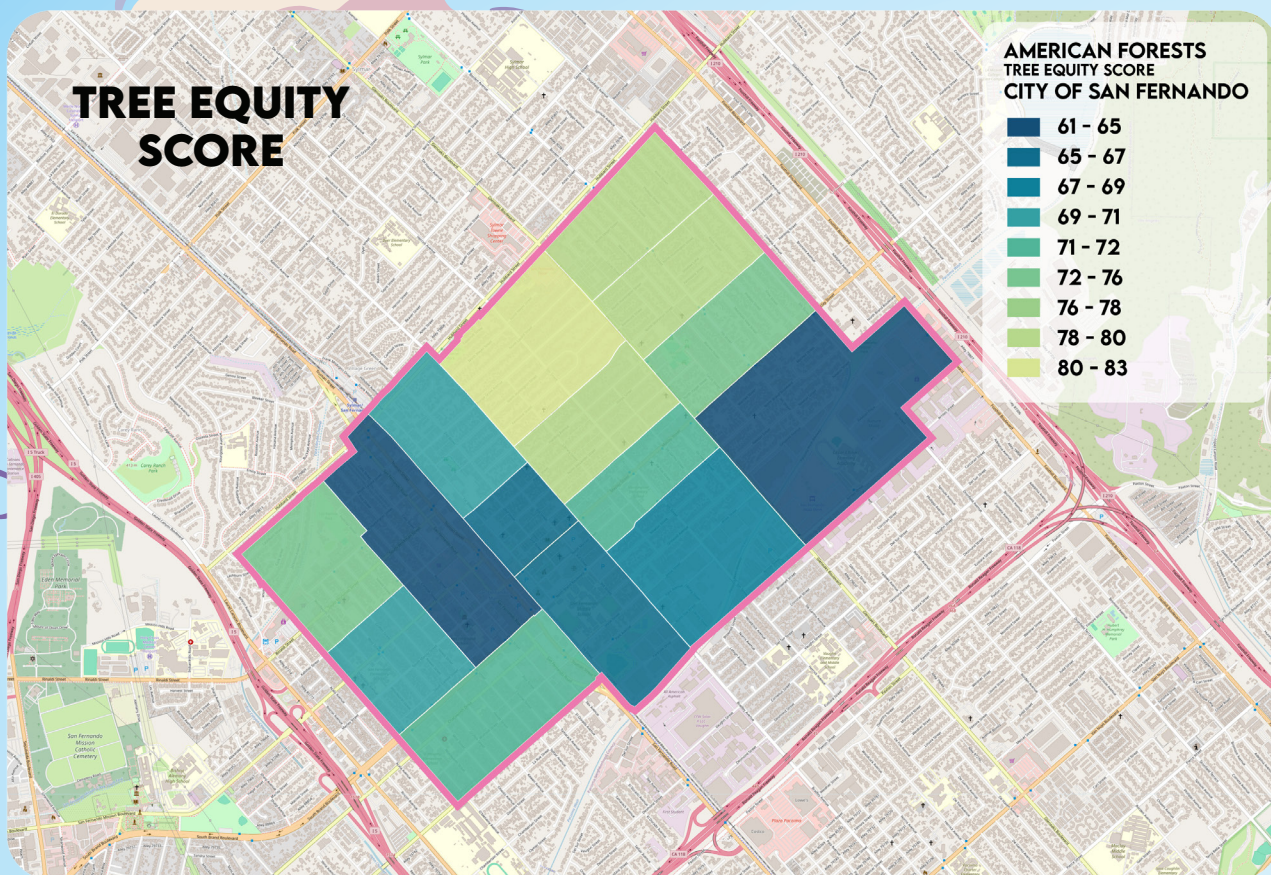
Extreme Heat Days are days when temperatures exceed **101.7°F**



SCAN HERE TO
LEARN MORE



Focusing on Tree Equity is a direct way to adapt to the "hotter days" and "Extreme Heat Days." The City of San Fernando's **URBAN FOREST MANAGEMENT PLAN** addresses this by aiming for an equitable distribution of tree benefits across the city. It recognizes that some neighborhoods have fewer trees than others, and these areas often experience higher temperatures, especially during "Extreme Heat Days"



Our city faces real climate challenges. Intense heat waves are tough, especially for our seniors, kids, and those with health issues. Water shortages from less rain threaten our parks and everyday needs. And when heavy rains do hit, our streets can flood, impacting homes and businesses.

HOW HAS UNUSUAL WEATHER IMPACTED YOUR DAILY LIFE IN SAN FERNANDO?

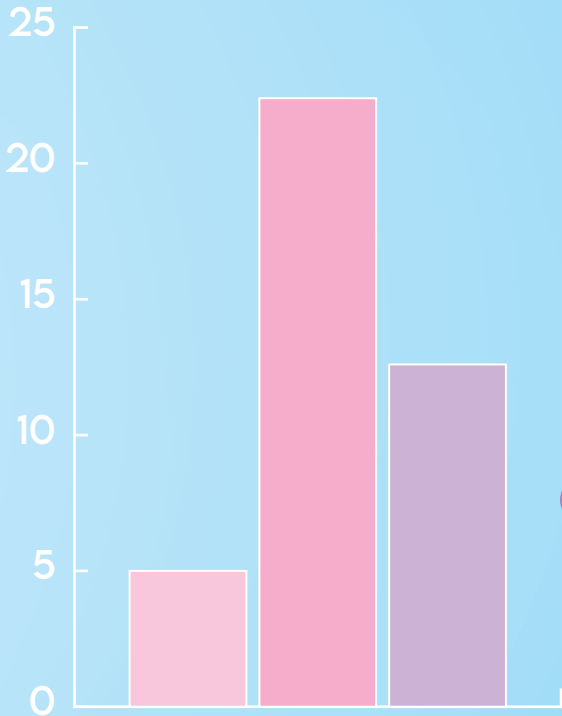
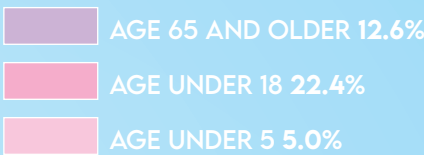


These changes
can affect
EVERYONE,
especially
those most
vulnerable in
our community.

PROJECTED ANNUAL AVERAGE DRY SPELL DURATION



CITY OF SAN FERNANDO PERCENTAGE POPULATION BY AGE



Our CARP is San Fernando's proactive answer. It's a living roadmap to cut down on harmful gases and build our city stronger against future impacts. It's our community's blueprint for a healthier, more resilient San Fernando, designed for today and tomorrow.



**WHICH PART OF
SAN FERNANDO'S
FUTURE ARE YOU
MOST EXCITED
TO HELP BUILD?**



While cutting emissions, we also prepare for the changes already underway. This '**ADAPTATION**' makes San Fernando stronger! Our Climate Change Vulnerability Assessment highlights key hazards:

1. Extreme Heat: We're planting more trees for vital shade – crucial as the number of warm nights is expected to increase, making it harder to cool down.
2. Precipitation and Drought: We're improving drainage to handle more intense precipitation events and planning for smart water use during prolonged drought conditions.

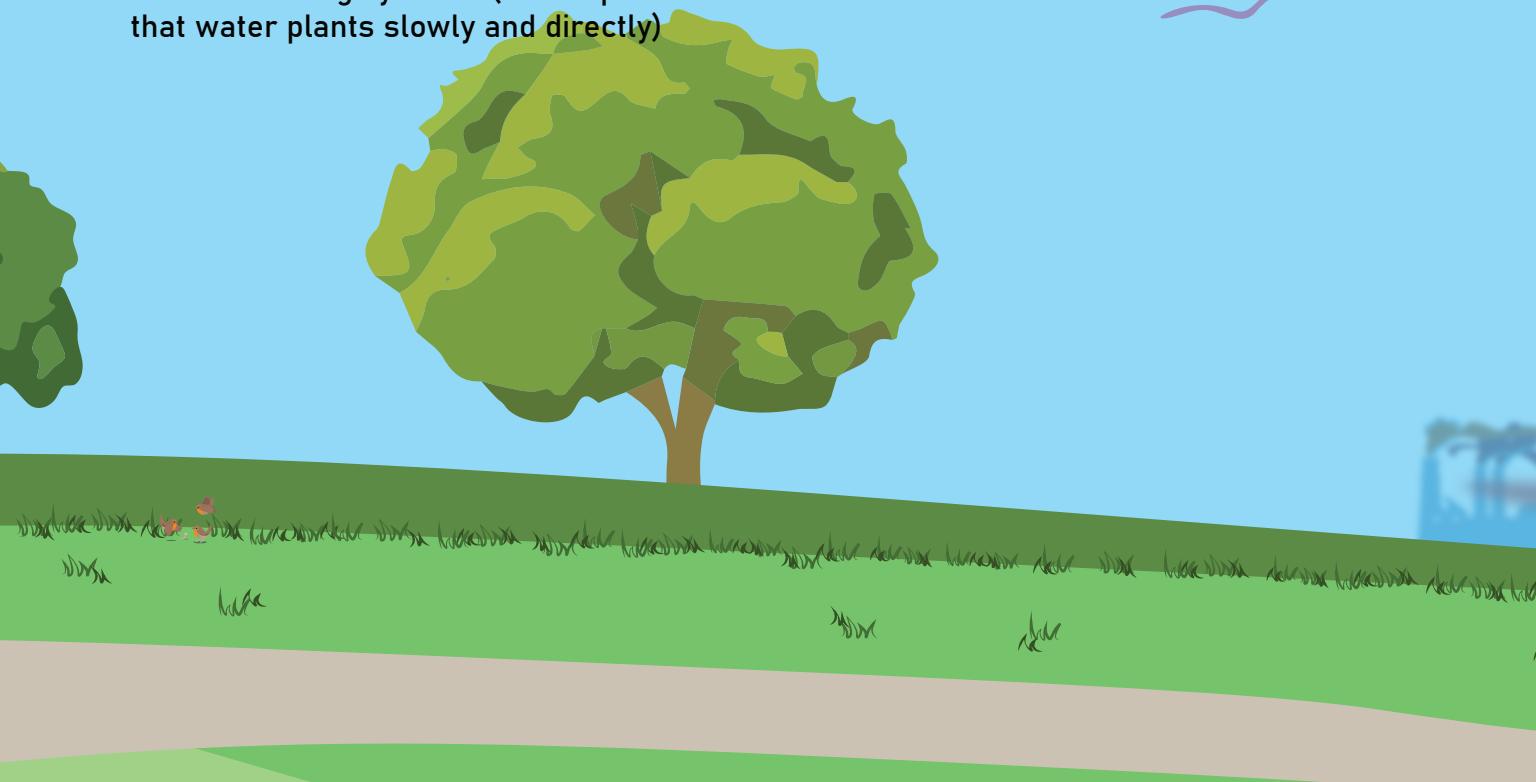
Warm nights are also expected to increase, **MAKING IT HARDER TO COOL DOWN.**



Good drainage helps save water and stop rain from flooding. Don't pave your whole backyard! Water needs to soak into the ground to prevent puddles and help nature. Our new City rule, Landscaping Standards, Sec. 106-345, says that at least 20% of your yard (not counting buildings or driveways) must be made of materials that let water through, like plants, gravel, or rocks. Think about using smart yard ideas that save water and help drainage:

1. Rain gardens or rock gardens (they hold rainwater!)
2. Walkways and patios that let water soak through (like stepping stones or special pavers)
3. Smart watering systems (like drip lines that water plants slowly and directly)

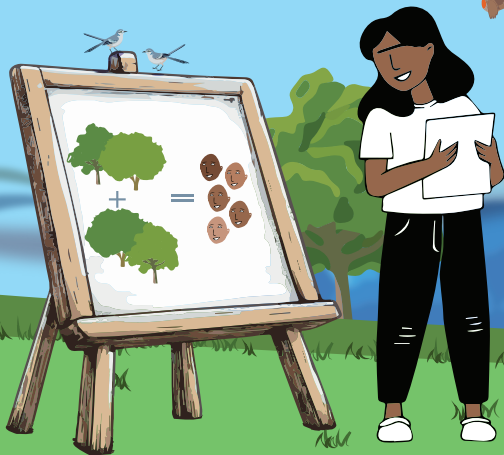
We're also working to protect nature for a healthier environment. A state law called **SENATE BILL 1889** helps us make sure animals can move safely through our green spaces, like parks and natural areas. This keeps our wildlife healthy and our local environment strong.



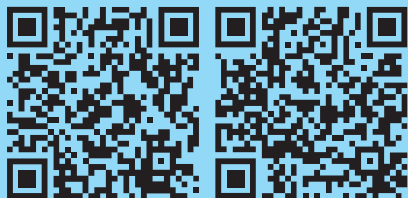
The air we breathe matters! Climate change projections for San Fernando indicate an increased risk of extreme heat, including a rise in very warm nights, and potential worsening of air quality, especially from wildfire smoke. The CARP aims to clear our skies: by encouraging electric vehicles and better public transit, we reduce tailpipe emissions.

The City has a goal of increasing the citywide tree canopy to 30%. Currently, the existing tree canopy is 19%. Plant a tree in your front yard to contribute to the urban forest!

**WHAT'S ONE
IDEA YOU HAVE
FOR MAKING
SAN FERNANDO
FEEL COOLER IN
THE SUMMER?**



FREE TREE RESOURCES




GREENING
FIELDS
PROJECT

TREE
PEOPLE

Planting more trees acts like
NATURE'S AIR FILTER, helping
us all breathe a little easier.

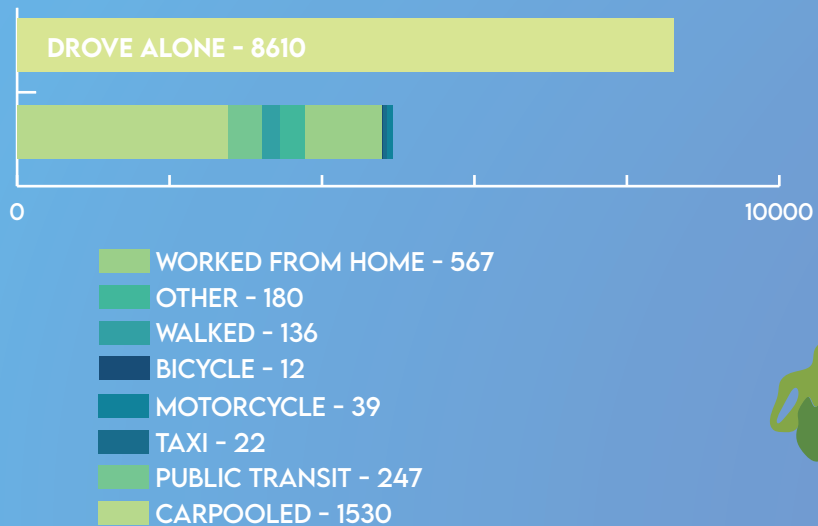




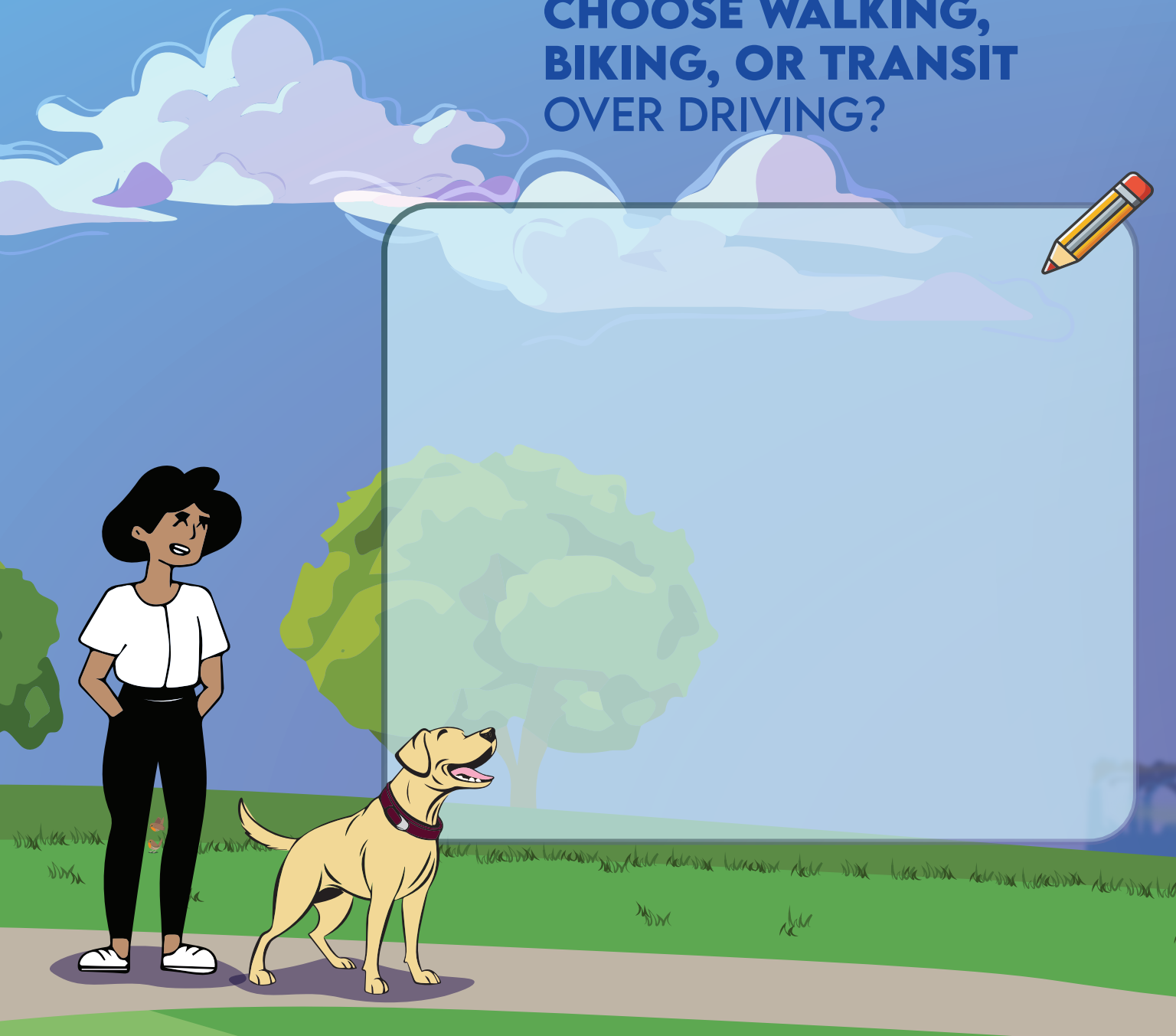
Our 2021 Community Greenhouse Gas Inventory Report shows that **ON-ROAD TRANSPORTATION AND BUILDING ENERGY ARE SAN FERNANDO'S BIGGEST EMISSION SOURCES**. In 2021, transportation accounted for 69% of our community-wide emissions, while electricity and natural gas used in buildings made up 28%. But here's the exciting part: every choice, from walking instead of driving, to switching off unused lights, directly shrinks our city's footprint.

Transportation was our #1 emission source in 2021.

NUMBER OF RESIDENTS PER TYPE OF TRANSPORTATION



**HOW OFTEN DO YOU
CHOOSE WALKING,
BIKING, OR TRANSIT
OVER DRIVING?**



IMAGINE OUR AIR WAS
SPARKLING CLEAN.
WHAT'S THE FIRST
OUTDOOR ACTIVITY
YOU'D DO IN SAN
FERNANDO?



READY TO HELP SHAPE SAN FERNANDO'S FUTURE?

TAKE OUR
SURVEY



WEBSITE

EVERY IDEA, every action, big or small, **HELPS BUILD A BETTER SAN FERNANDO** for generations to come.

Join us in making our city more resilient, sustainable, and vibrant. Contribute to the Climate Action and Resilience Plan and all future city improvements.



This booklet is your guide to understanding our city's living roadmap for a healthier, safer, and more connected future.
Thank you to our partners who have been working to bring these important updates to our community.



THE CITY OF
SAN FERNANDO



**Climate
Resolve**



**Pacoima
Beautiful**

HOW DO YOU PLAN
TO GET
INVOLVED?





WEBSITE

